

Curlex® Hi-Vis Excelsior Logs™

Product Description

Durable, high visibility solution with Curlex fibers



Curlex Hi-Vis Excelsior Logs are easy to move with their durable handles. But the best part of them is what you don't see. These are the only high-visibility logs filled with the naturally seed-free Great Lakes Aspen Curlex fibers that you know and trust.

Curlex fibers provide superior levels of sediment control and are able to remove polynuclear aromatic hydrocarbons (PAHs) from runoff. Curlex is made from fibers that are recognized by the EPA as an oil sorbent.

Applications

- Control site access
- Promote safe on-site driving speeds
- Delineate sensitive areas
- Additional sediment and stormwater control applications
- Stockpile control
- Hazard marker (example: manhole delineation)
- Suitable replacement to safety fencing in certain applications

Benefits

- Hi-Vis shell quickly and safely identifies perimeter
- HD polyethylene shell for long life and durability to reuse across multiple jobsites
- 4 Integrated handles for easy moving
- Proven performance of Curlex fibers
- Keeps people away from dangers on site

Containment Sleeve Specifications

Index Property	Test Method	Value
Tensile Strength (MD x TD)	ASTM D4632	267 lb.-f x 168 lb.-f (1187.7 N x 747.3 N)
Elongation at Max Load (MD x TD)	ASTM D4632	66% x 109%
Permittivity	ASTM D4491C	180 GPM/ft ² (7334 L/min/m ²)

Curlex Hi-Vis Excelsior Logs Available Sizes

Product Name	Curlex Hi-Vis 9 in x 5 ft	Curlex Hi-Vis 9 in x 10 ft	Curlex Hi-Vis 9 in x 18 ft
Nominal Diameter	9 in (22.86 cm)	9 in (22.86 cm)	9 in (22.86 cm)
Starting Sleeve Length	≥ 5.0 ft (1.5 m)	≥ 10.0 ft (3.0 m)	≥ 18.0 ft (5.5 m)
Finished Log Length	≥ 5.0 ft (1.5 m)	≥ 10.0 ft (3.0 m)	≥ 18.0 ft (5.5 m)



THE MOST TRUSTED NAME IN EROSION CONTROL

Curlex® Hi-Vis Excelsior Logs™

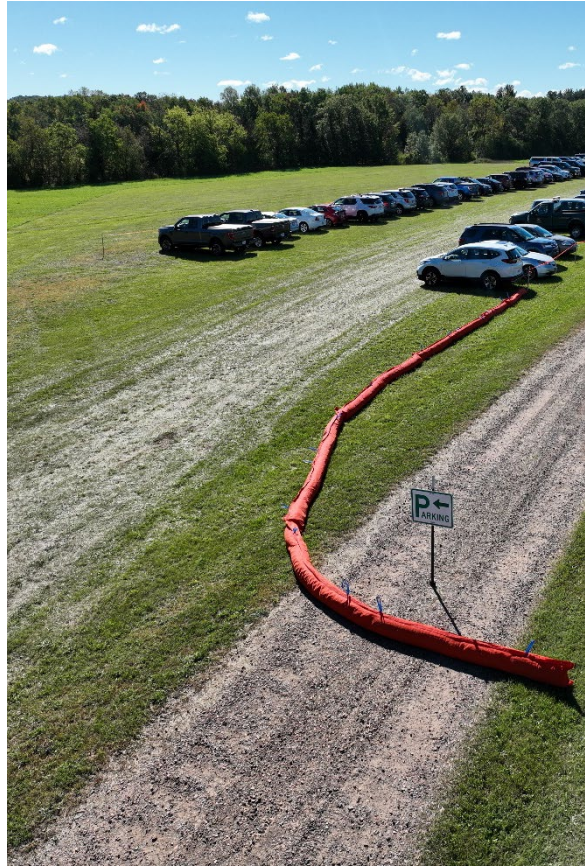
Durable, high visibility solution with Curlex fibers

Product Description

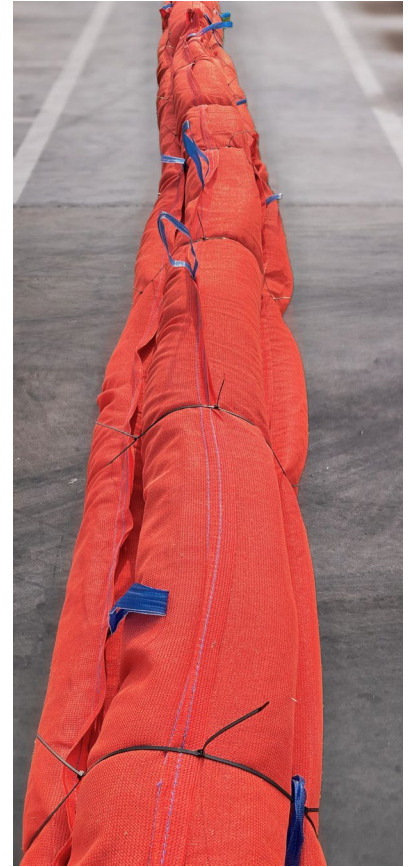
Durable, simple to transport, and easy to use.



**Criss-cross staking
installation.**



Temporary parking lot delineation.



**Pyramid stack for increased mass
on pavement, hard soil areas, frozen
ground, or other applications
not conducive to staking.**



Stock pile protection.



Caution/safety marker.