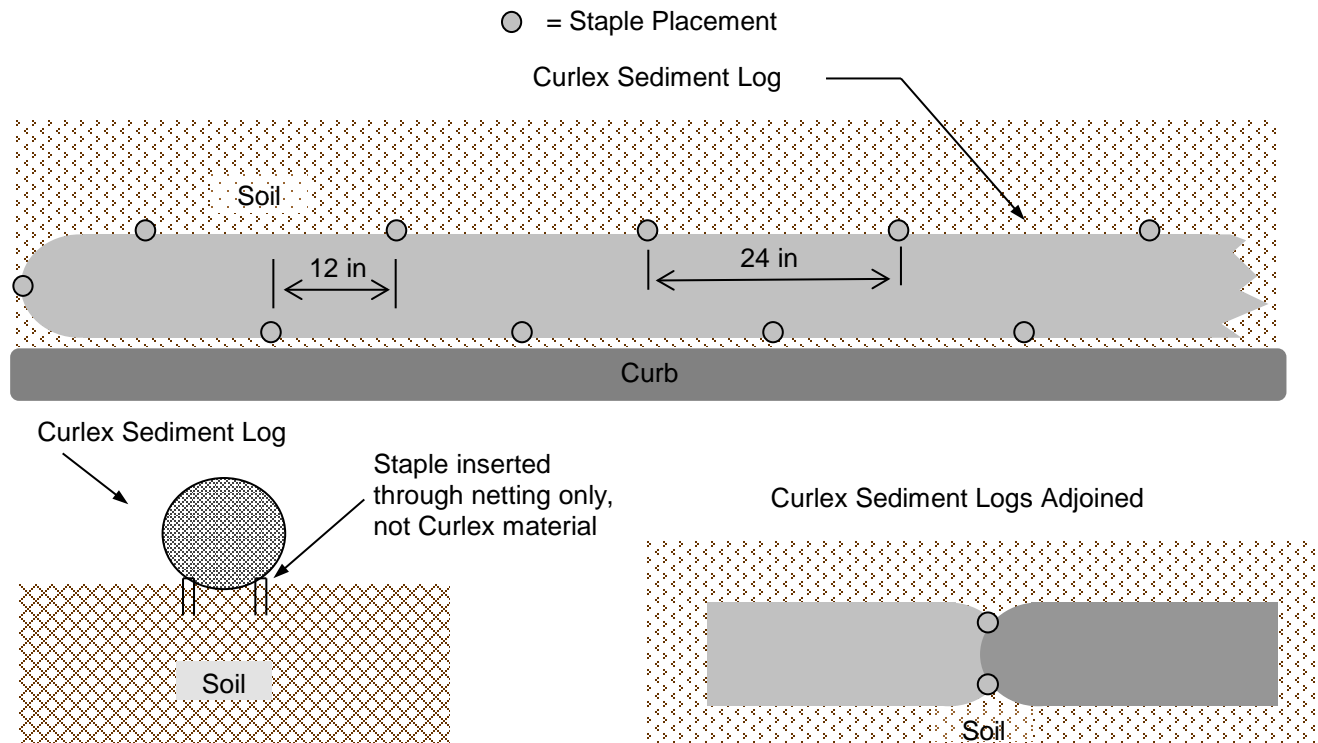


Curlex® Sediment Log® Staple Pattern Guide



Notes:

1. Drawing not to scale.
2. Recommended staples are E-Staple®, 1 in x 6 in, U-shaped, 11 gauge wire, or 2 in x 8 in, U-shaped, 8 gauge wire.
3. Staples shall be installed 24 in apart on each side of the Curlex Sediment Log. The two rows of staples shall be staggered by 12 in along the length of the Curlex Sediment Log. Installation of one Curlex Sediment Log shall include one staple on each end of the product. All staples shall be fully inserted into the subgrade below the Curlex Sediment Log.
4. Adjoin two Curlex Sediment Logs by placing staples through the netting of both logs on both sides of the products.
5. Anchoring with staples is only applicable for 6 in and 9 in Curlex Sediment Logs and shall not be used in channelized flow applications.
6. Stakes may be used in conjunction with staples for additional anchoring of 6 in and 9 in Curlex Sediment Logs, as deemed necessary by the Engineer.