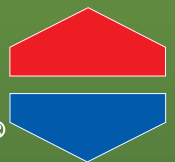


INVENTORS OF CURLEX®, THE ORIGINAL NAME IN
THE EROSION AND SEDIMENT CONTROL INDUSTRY



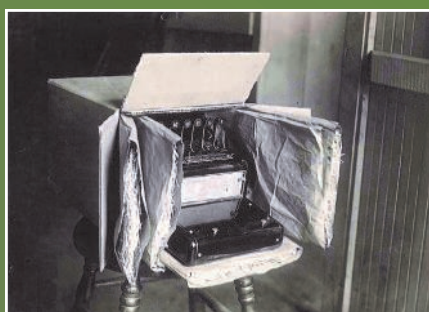
How Green is
Your Footprint?®

American
Excelsior
Company®
Earth Science Division



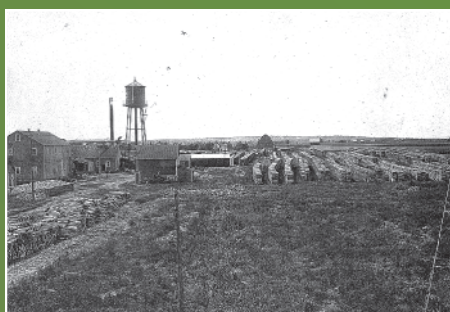
A Legacy Spanning More Than 125 Years

For more than a century, American Excelsior Company® (AEC) has manufactured and distributed complete lines of products for packaging, cushioning, engineered foam specialties, erosion and sediment control, and a wide variety of engineered wood fibers. AEC's nationwide manufacturing and distribution capabilities ensure efficient delivery from multiple locations across the country.



1888

The Excelsior Wrapper Company founded in Sheboygan, Wisconsin.



1905

Rice Lake Excelsior Company incorporated by H.W. Selle.



1929

Excelsior Wrapper Company and H.W. Selle Company merge to become American Excelsior Corporation.

Success through Innovation...

- 1963 — AEC invents Erosion Control Blankets (ECBs) with Curlex® I.
- 1980 — First Double Net ECB (Curlex® II) introduced.
- 1985 — First High Velocity ECB (Curlex® High Velocity™) introduced.
- 1994 — First excelsior sediment log (Curlex® Sediment Log®) for filtration introduced.
- 1995 — American Excelsior Company's Earth Science Division formed.
- 1996 — ErosionLab® large-scale erosion & sediment control testing laboratory opens.
- 2000 — First ECB with no netting (Curlex® NetFree™) introduced.
- 2001 — First TRM using post-consumer, recycled fibers (Recyclex® TRM) introduced.
- 2006 — First 100% biodegradable turf staple (E-Staple®) introduced.
- 2012 — Curlex® Bloc, an American-made coir log alternative and natural filter introduced to the market.

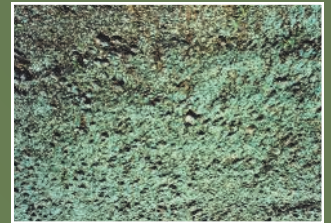
Hydraulic Mulches

Bindex™ Family of Mulches



The Bindex™ family of hydraulic mulches includes Bindex bonded fiber matrix (BFM) along with standard wood fiber and wood/paper blended mulches.

Excel® Fibermulch II



Excel® Fibermulch II is made from all-natural, Great Lakes Aspen wood fibers, providing an organic cover to protect seeds, enhance germination, and hasten revegetation when mixed with water.

Short-Term Erosion Control Blankets



Curlex® NetFree™ Blankets

NetFree means: No more tripping on netting; No more entrapment of wildlife and pets; No more netting tangled in mowing equipment. NetFree contains unique, interlocking, curled and barbed Great Lakes Aspen fibers stitched into the blanket with biodegradable thread. NetFree is 100% biodegradable.



AEC Premier Straw® Blankets

AEC Premier Straw blankets use only top quality, organic, certified weed seed free, agricultural straw fibers. A single or double net is then stitched to the topside or both sides of the ECB. A variety of nettings are available depending on your project requirements.



Curlex® CL Blankets

A cost-effective, lighter version of standard Curlex, CL provides performance and vegetation establishment benefits superior to straight lined fiber blankets such as straw.



Curlex® — The Original Erosion Control Blanket

Developed in the early 1960's, Curlex excelsior blankets are specifically designed using unique cuts of Great Lakes Aspen fibers to promote ideal growing conditions for grass seed, while simultaneously protecting topsoil from wind and water erosion. Curlex blankets also have a built-in swell factor—wet, curled excelsior fibers expand and interlock to form a strong fiber matrix.

Long-Term Erosion Control Blankets



AEC Premier Straw/Coconut™ Blankets

Thirty-percent top quality coconut fibers and seventy-percent finest quality weed seed-free agricultural straw are blended and evenly distributed throughout. Stitched with a UV-enhanced black net on top and a UV-enhanced green net on bottom.



Curlex® Double Net (Curlex® II)

A specific cut of Great Lakes Aspen curled wood excelsior with 80% six-inch fibers or greater fiber length. It shall be of consistent thickness, with fibers evenly distributed throughout the entire area of the blanket. Material is naturally seed free and does not contain chemical additives.



AEC Premier Coconut™

AEC Premier Coconut ECB is made from the finest quality strands of coconut fiber and is evenly distributed in ECB form and stitched to a UV enhanced heavy black net on top and bottom.



Curlex® III

Naturally seed-free Great Lakes Aspen Excelsior Fibers designed to provide protection for grass seed and topsoil from wind and water erosion for ≤36 months, while simultaneously promoting ideal growing conditions.

Erosion Control Blanket Installation Made Easier

American Excelsior Company has manufactured a folded center erosion control blanket (ECB) for over 20 years. This feature comes standard on most of our excelsior and straw ECBs. The fold allows the complete unrolling of the ECB and increases the efficiency of installation. Figures 1 through 4 illustrate how easy it is to unroll the end of our ECBs. The solution is another added benefit that comes standard when you select products from American Excelsior—the company that invented ECBs.



Figure 1. Locate red line near the end of the ECB.

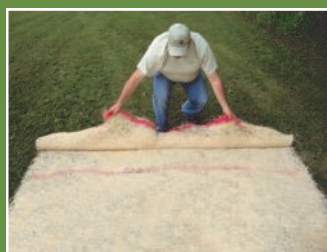


Figure 2. Pull end of ECB along red line.



Figure 3. Walk ECB back, while holding near both corners.



Figure 4. Properly position unrolled ECB for installation

Permanent Erosion Control Blankets & Turf Replacement Mats



Curlex® Enforcer®

Naturally seed free Great Lakes Aspen Excelsior Fibers designed to provide a fiber service life of ≤36 months, but the remaining components of the product are permanent. It is bound by two layers of extra heavy-duty black UV stabilized netting to provide permanent reinforcement between established vegetation and root systems in channel bottoms or on slopes. Curlex Enforcer is a bio-composite turf reinforcement mat (TRM).



Recyclex® TRM and Recyclex® TRM-V

The Recyclex® family of products are the first permanent turf reinforcement mats (TRMs) with fibers made from 100% recycled post-consumer goods—"green or brown bottles". Not only are Recyclex products environmentally responsible, they are designed to meet your most difficult erosion control challenges. For long-term permanent erosion control, a Recyclex product is the answer.

With **American Excelsior's new Eco-Sustainable line**, you now have one source of products engineered by success, documented with ASTM large-scale testing, provide an opportunity to earn LEED® points and are backed by proven performance. Our Eco-Sustainable line is led by **SUSTAINABLE, ENVIRONMENTALLY FRIENDLY, 100% BIODEGRADABLE, and RECYCLED products:**

- **Curlex®, Curlex® CL and AEC Premier Straw®** :
SUSTAINABLE ECB's made with Conwed's® ENVIRONMENTALLY FRIENDLY Nature Zone™ netting and/or Ecocycle™ Technology.
- **Curlex® NetFree™** :
A SUSTAINABLE ECB without netting and made from BIODEGRADABLE excelsior wood fibers.
- **Curlex® Sediment Log®** :
SUSTAINABLE products to filter runoff, retain sediment and dissipate flows using BIODEGRADABLE excelsior wood fibers.
- **E-Staple®** :
BIODEGRADABLE staple to anchor rolled products to the soil.
- **Recyclex® TRM and Recyclex® TRM-V:**
TRMs made from RECYCLED soda bottles.



How Green is
Your Footprint?®

Sediment Control Devices



Curlex® Bloc

An American-made alternative to coir logs, Curlex® Blocs are designed to be functional for 3+ years.* The optional biodegradable containment material is designed to start degrading during the first year to allow voluntary seed and sediment into the Curlex fiber matrix. Applications include, but are not limited to, shoreline erosion control, sediment control, perimeter control, around inlets or outlets, runoff diversion and as a natural filter.

- Naturally seed-free and nontoxic
- Flat/Rectangular in design
- High density
- Excellent natural filter



Curlex® Sediment Logs®

Environmentally-friendly, degradable, naturally seed-free Curlex Sediment Logs allow water to filter through (not underneath) the diameter of the porous, interlocked fiber log matrix. As it does, velocity is reduced and sediment is collected on the upstream side of the excelsior fiber log, as well as in the curled and barded fiber matrix.



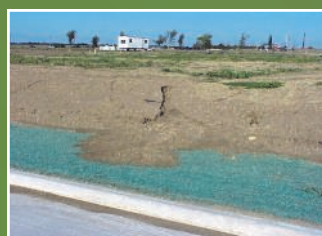
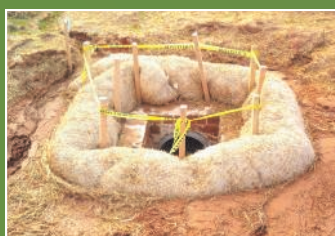
AEC Premier Straw® Wattles

Tubular products consisting of the finest available agricultural straw fibers encased in durable netting. The straw fibers are certified weed seed free. Straw wattles are dense by nature, thus they pool water unlike Curlex® Sediment Logs® that allow water to filter through its porous matrix.



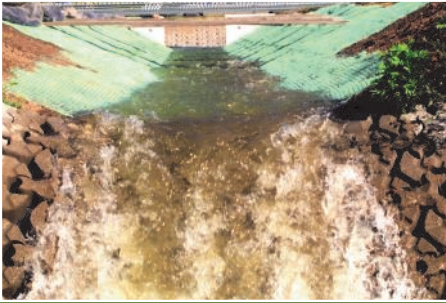
Curlex® SiltTRAP™

Curlex SiltTRAP offers a unique way of installing a temporary buffer strip to capture sediment before it washes away, filling gutters, clogging pipes, and generally creating a mess. The naturally seed-free, unique Curlex excelsior fibers in SiltTRAP filter soil from the runoff and greatly reduce off-site problems without the installation and disposal hassles of silt fence.



*Functional Longevity varies from region to region because of differences in climatic conditions.

ErosionLab®



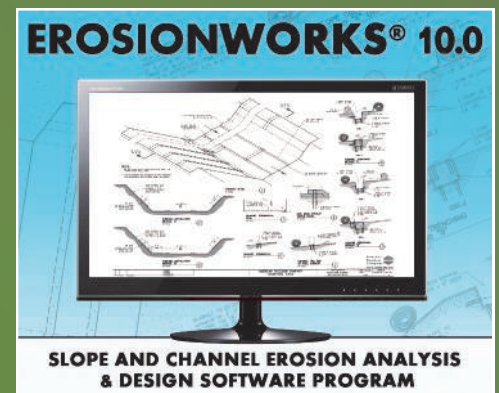
ErosionLab® has been a great resource to city, county and federal agencies, as well as the engineering and landscape architect professionals, since it's opening in 1996. The facility is the largest privately-owned lab of its kind, and is viewed by many organizations as an industry leader, demonstrating commitment on behalf of the erosion control industry. Trained, Certified Professional in Erosion and Sediment Control (CPESC) and Certified Professional in Stormwater Quality (CPSWQ) staff oversees testing of erosion and sediment control products, educational field days, and research and development processes. The large-scale erosion control testing laboratory follows several ASTM methods in its three primary facilities: the Rainfall Erosion Facility (REF), the Channel Erosion Research Facility (CERF), and the Sediment Control Facility (SCF). The lab has allowed American Excelsior Company to test and retest various new ideas through the research and development process followed at ErosionLab.

ErosionWorks®

ErosionWorks® is a slope and channel erosion analysis and design software program.

- No more downloads! all program features now available online
- New Slope interruption devices incorporated
- New Enhanced Digital Plan Book for easier specifying
- New Good, Better, Best recommendations for all slope and channel erosion calculations
- New Simplified Material Estimator functionality
- New report formats and management features based on user feedback
- New Searchable DOT approvals by state
- Single storm event design with local data

Register for **FREE** @
www.ErosionWorks.com



ONE MANUFACTURER. MULTIPLE LOCATIONS. ALL SOLUTIONS.

As a leading manufacturer of erosion and sediment control, wood fibers, and flexible foams, American Excelsior Company has what you need for all of your erosion, sediment, filtration and revegetation needs. Our multiple locations and over five-hundred distributor outlets throughout the United States have everything from hydraulic mulches, straw blankets and wattles to excelsior blankets, sediment logs and turf reinforcement mats. We are also home to the industry's largest privately-owned, large-scale testing facility, ErosionLab®, which is used for research and development as well as industry education.



1 YAKIMA, WA
609 South Front Street
Yakima, WA 98901
p: 509-575-5794
f: 509-575-0439

2 ARLINGTON, TX
★ 850 Ave H East
(800) 777-SOIL (7645)
p: (817) 385-3500
f: (888) 352-9585

3 RICE LAKE, WI
831 Pioneer Avenue
Rice Lake, WI 54868
p: 715-234-6861
f: 715-234-6823

4 SHEBOYGAN, WI
3127 South 31st Street
Sheboygan, WI 53081
p: 920-458-4333
f: 920-458-5366

5 WEST CHICAGO, IL
385 Fenton Lane Suite B
West Chicago, IL 60185
p: 630-693-3200
f: 630-693-9241

6 NORWALK, OH
180 Cleveland Road
Norwalk, OH 44857
p: 419-663-3241
f: 419-663-7169

7 FLORENCE, AL
4032 Parkway Drive
Florence, AL 35630
p: 256-764-4613
f: 256-767-7606

Distributed by:



850 Avenue H East
Arlington, Texas 76011
Phone: 800-777-SOIL
www.Curlex.com



Form#031/031017