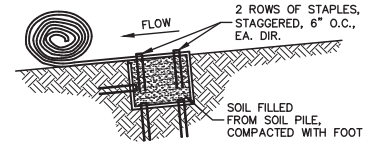
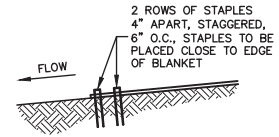
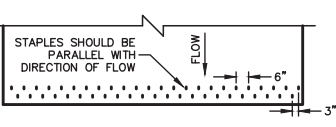
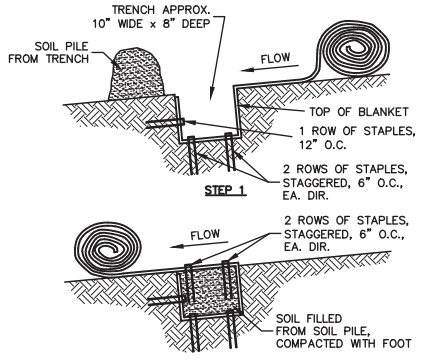
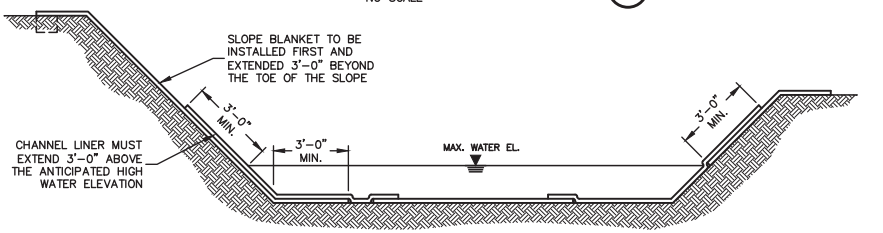
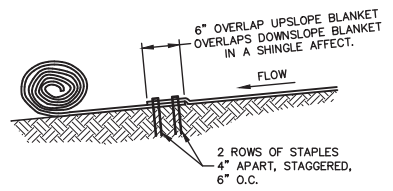
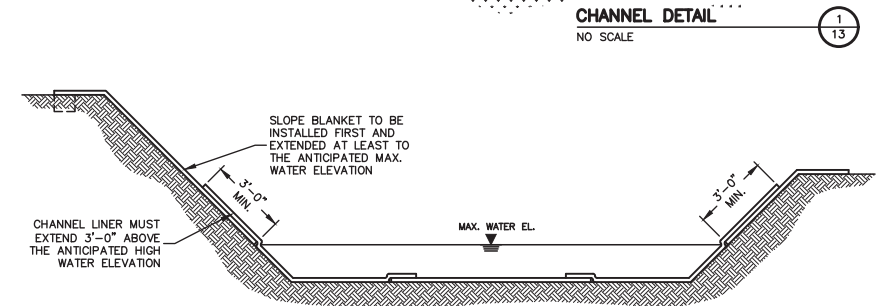


NOTES:
1. SEE AEC PREMIER COCONUT™ SLOPE APPLICATION DETAIL SHEET FOR PROPER SLOPE INSTALLATION.

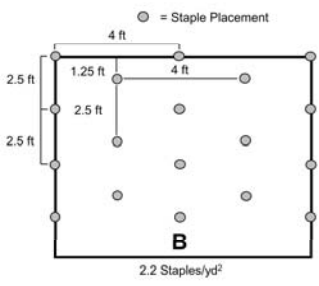


CHANNEL TRENCHING METHOD "A"
NO SCALE

AEC Premier Coconut™ Staple Pattern Guide

For 8 ft wide AEC Premier Coconut Erosion Control Blankets

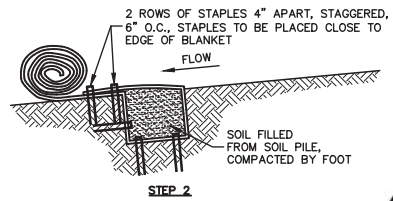
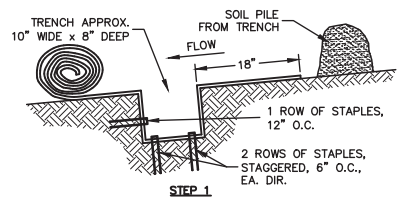
Application	Channel
Application	≤ 2.25 lb/ft ² (108 Pa) Shear Stress ≤ 9.0 ft/sec (2.7 m/sec) Velocity
Staple Pattern	B



Notes:

1. Recommended staples are a minimum 4 in biodegradable E-Staple®, as provided by American Excelsior Company, or 6 in wire for cohesive soils and 6 in biodegradable E-Staple®, as provided by American Excelsior Company, or 8 in wire for non-cohesive soils.
2. For best results insert staples so heads are parallel to the flow of water.
3. Adjust staple pattern so staples are placed in critical channel points (e.g. slope interface, channel bottom) as illustrated below:

Critical channel points are circled.



CHANNEL TRENCHING METHOD "B"
NO SCALE

