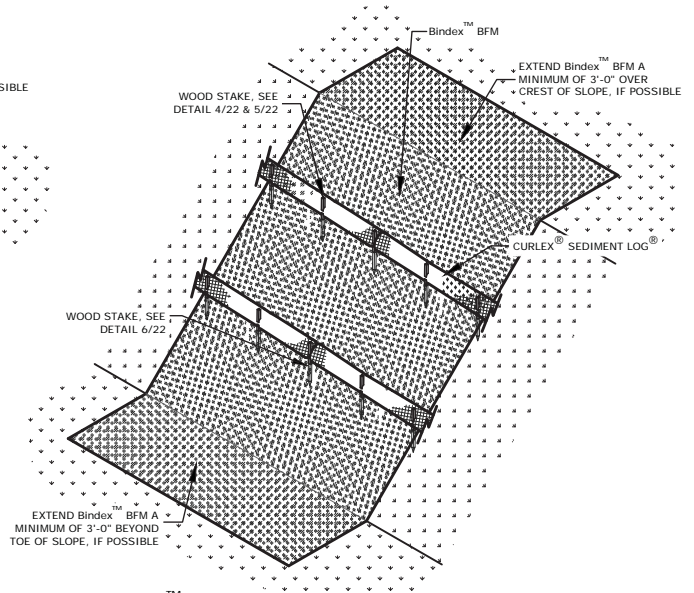


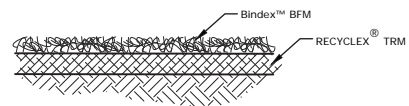
Bindex™ BFM SLOPE DETAIL
NO SCALE

- NOTE:
- 1) APPLY Bindex™ BFM FROM TWO DIRECTIONS FOR BEST RESULTS.
 - 2) SEE Bindex™ BFM INSTALLATION GUIDELINES FOR APPLICATION RATES, LOADING CHART, MIXING PROCEDURES, AND APPLICATION TIPS.



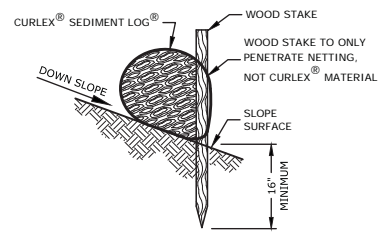
Bindex™ BFM WITH SLOPE INTERRUPTION DETAIL
NO SCALE

- NOTE:
- 1) TRENCH OPTION IS MOST APPLICABLE IN LOOSE, UNCONSOLIDATED SOILS.
 - 2) 1 1/8" x 1 1/8" x 30" WOODEN STAKES ARE RECOMMENDED FOR 6", 9", AND 12" SEDIMENT LOG®.
 - 3) 1 1/8" x 1 1/8" x 48" WOODEN STAKES ARE RECOMMENDED FOR 20" SEDIMENT LOG®.
 - 4) INSTALL CURLEX™ SEDIMENT LOG® PERPENDICULAR TO SLOPE LENGTH AT PROPER SPACING INTERVAL PRIOR TO APPLYING Bindex™ BFM WHEN SLOPE INTERRUPTION IS USED.

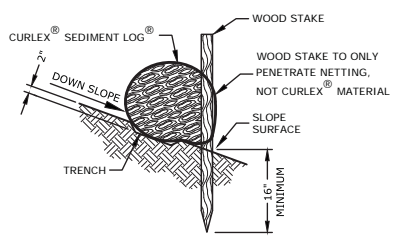


INFILLING RECYCLEX™ TRM WITH Bindex™ BFM DETAIL
NO SCALE

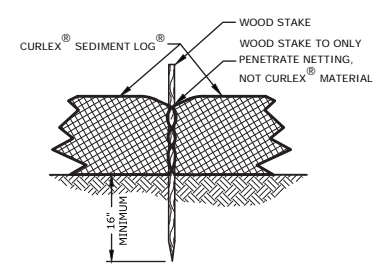
- NOTE:
- 1) PROPERLY INSTALL RECYCLEX™ TRM FIRST THEN INFILL WITH Bindex™ BFM AT 3,500 lb/acre.
 - 2) OPTIONALLY, 1,000 lb/acre Bindex™ BFM AND A PORTION OF THE SEED AND OTHER SPECIFIED AMENDMENTS MAY BE APPLIED TO SOIL FIRST FOLLOWED BY PROPER INSTALLATION OF RECYCLEX™ TRM AND LASTLY INFILLING RECYCLEX™ TRM WITH THE REMAINING 2,500 lb/acre OF Bindex™ BFM AND PORTION OF SEED AND SPECIFIED AMENDMENTS.
 - 3) SEE Bindex™ BFM INSTALLATION GUIDELINES, LOADING CHART, MIXING PROCEDURES, AND APPLICATION TIPS.



STAKE DETAILS (ON BARE SOIL)
NO SCALE



STAKE DETAIL (OPTIONAL TRENCH ON BARE SOIL)
NO SCALE



STAKE DETAIL (FRONT VIEW)
NO SCALE

American Excelsior Company Recommended Curlex™ Sediment Log® Maximum Spacing on Slopes*

		Product Name			
		6 in Curlex Sediment Log ft (m)	9 in Curlex Sediment Log ft (m)	12 in Curlex Sediment Log ft (m)	20 in Curlex Sediment Log ft (m)
Slope Gradient	≤4H:1V	20 (6.1)	40 (12.2)	60 (18.3)	80 (24.4)
	3H:1V	15 (4.6)	30 (9.1)	45 (13.7)	60 (18.3)
	2H:1V	10 (3.0)	20 (6.1)	30 (9.1)	40 (12.2)
	1H:1V	5 (1.5)	10 (3.0)	15 (4.6)	20 (6.1)

* Tighter spacing may be required based on soil type and seasonal rainfall patterns. For best results, use slope interruption devices in conjunction with rolled erosion control products.

