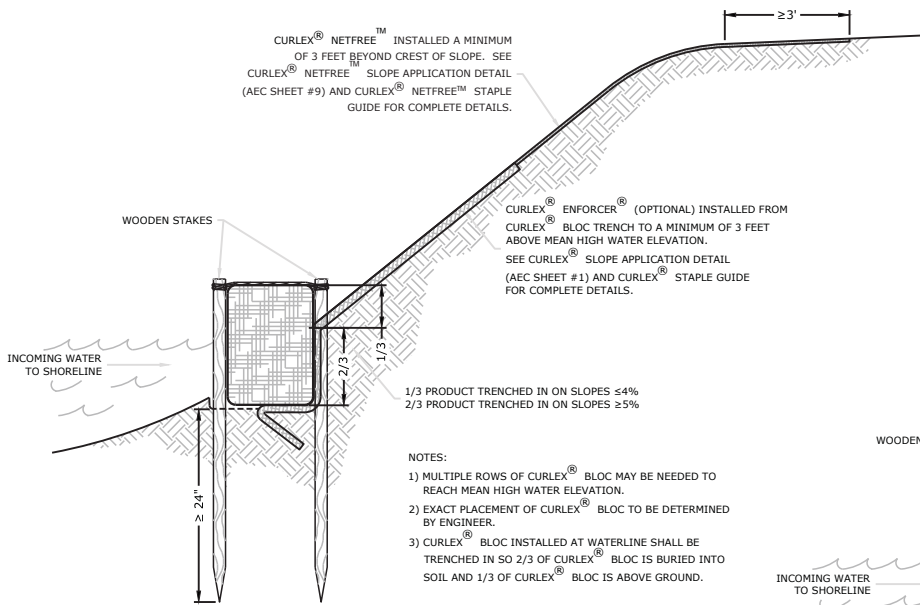


CURLEX[®] NETFREE[™] INSTALLED A MINIMUM OF 3 FEET BEYOND CREST OF SLOPE. SEE CURLEX[®] NETFREE[™] SLOPE APPLICATION DETAIL (AEC SHEET #9) AND CURLEX[®] NETFREE[™] STAPLE GUIDE FOR COMPLETE DETAILS.



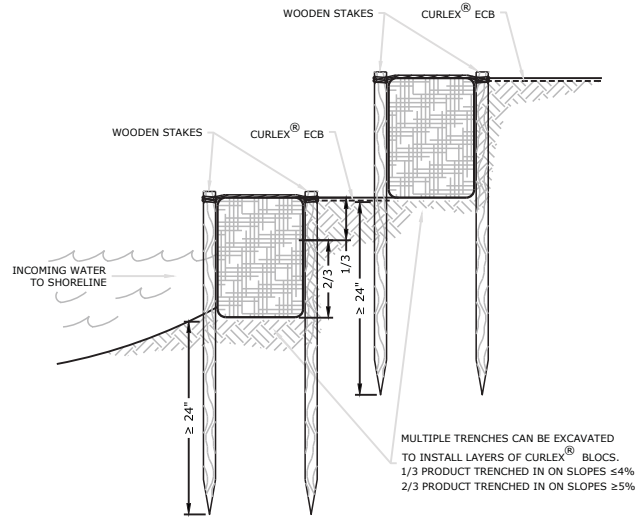
CURLEX[®] BLOC SHORELINE CROSS SECTION DETAIL
NO SCALE

1
23

- NOTES:
- 1) MULTIPLE ROWS OF CURLEX[®] BLOC MAY BE NEEDED TO REACH MEAN HIGH WATER ELEVATION.
 - 2) EXACT PLACEMENT OF CURLEX[®] BLOC TO BE DETERMINED BY ENGINEER.
 - 3) CURLEX[®] BLOC INSTALLED AT WATERLINE SHALL BE TRENCHED IN SO 2/3 OF CURLEX[®] BLOC IS BURIED INTO SOIL AND 1/3 OF CURLEX[®] BLOC IS ABOVE GROUND.

CURLEX[®] ENFORCER[®] (OPTIONAL) INSTALLED FROM CURLEX[®] BLOC TRENCH TO A MINIMUM OF 3 FEET ABOVE MEAN HIGH WATER ELEVATION. SEE CURLEX[®] SLOPE APPLICATION DETAIL (AEC SHEET #1) AND CURLEX[®] STAPLE GUIDE FOR COMPLETE DETAILS.

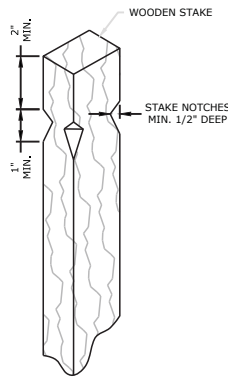
1/3 PRODUCT TRENCHED IN ON SLOPES ≤4%
2/3 PRODUCT TRENCHED IN ON SLOPES ≥5%



MULTIPLE CURLEX[®] BLOC BANK CROSS SECTION DETAIL
NO SCALE

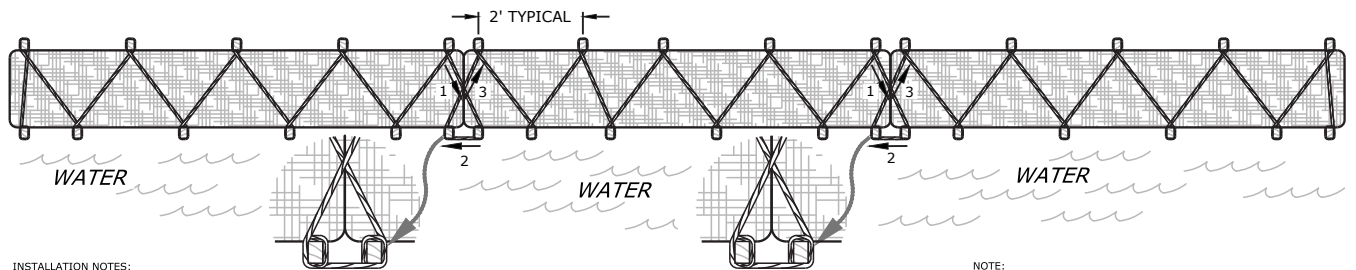
MULTIPLE TRENCHES CAN BE EXCAVATED TO INSTALL LAYERS OF CURLEX[®] BLOC. 1/3 PRODUCT TRENCHED IN ON SLOPES ≤4%
2/3 PRODUCT TRENCHED IN ON SLOPES ≥5%

2
23



STAKE NOTCHING DETAIL
NO SCALE

3
23



CURLEX[®] BLOC STAKING AND ROPING DETAIL
NO SCALE

4
23

INSTALLATION NOTES:

- 1) NON-STRETCHING ROPE WHEN WET.
- 2) 1 1/8" X 1 1/8" X 48" WOODEN STAKES ARE RECOMMENDED.
- 3) POUND STAKES TIGHTLY NEXT TO CURLEX[®] BLOC LEAVING APPROXIMATELY 4" OF STAKE ABOVE SURFACE OF CURLEX[®] BLOC.
- 4) INSTALL ROPE ACCORDING TO DRAWING (ENSURE ROPE IS WRAPPED TIGHTLY IN STAKE NOTCHES).
- 5) KNOT OFF ROPE TO STAKE AT LEAST EVERY 25 FEET OF ROPE.
- 6) POUND DOWN STAKES FLUSH WITH SURFACE OF CURLEX[®] BLOC AFTER ALL IS INSTALLED TO TIGHTEN ROPES.
- 7) ABUT ADJOINING CURLEX[®] BLOCs TIGHTLY AND SECURE WITH STAKES AND ROPE ACCORDING TO DRAWING.
- 8) INCORPORATION OF LIVE PLANTS INTO AND AROUND CURLEX[®] BLOCs IS COMMON. ENSURE SUFFICIENT MOISTURE IS AVAILABLE FOR TARGET SPECIES SELECTED. USE PLANTING IRON TO CREATE HOLE IN CURLEX[®] BLOC THEN PLACE PLUG DEEP INTO CURLEX[®] BLOC. TYPICALLY, PLUGS ARE INSTALLED IN A STAGGERED PATTERN ALONG THE LENGTH OF THE CURLEX[®] BLOC.
- 9) 8' LONG CURLEX[®] BLOC SHOWN. ADJUST STAKING AND ROPING PATTERN ACCORDINGLY IF USING 4' LONG CURLEX[®] BLOCs.

NOTE:

TRENCHING OF CURLEX[®] BLOC IS OPTIONAL FOR INLET OR OUTLET PROTECTION, PERIMETER CONTROL, RUNOFF DIVERSION AND FILTERING APPLICATIONS. SAND BAGS, OR OTHER WEIGHTED OBJECTS, MAY BE PLACED ACROSS THE TOP OF THE CURLEX[®] BLOC IN LIEU OF STAKES AND ROPE UPON APPROVAL OF THE ENGINEER.

