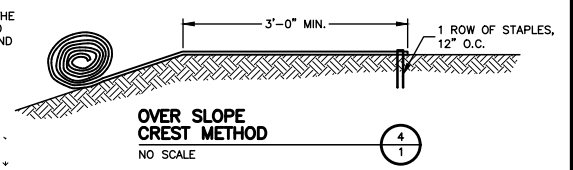
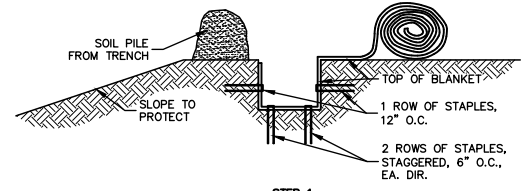


SLOPE DETAIL
NO SCALE

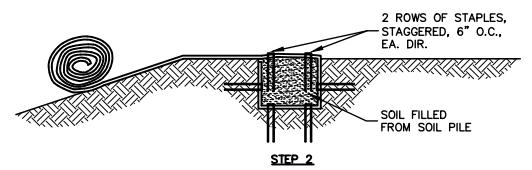


OVER SLOPE CREST METHOD
NO SCALE

DO NOT NEED TO TRENCH BLANKET IF IT CAN BE EXTENDED A MINIMUM OF 3'-0" OVER THE CREST OF THE SLOPE.

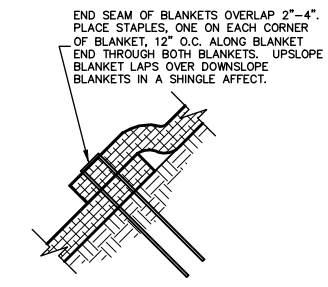


STEP 1

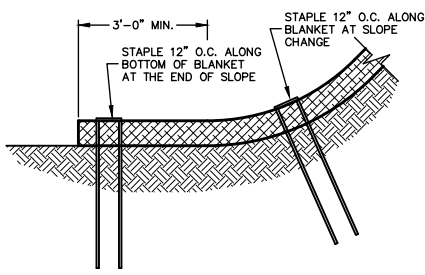


STEP 2

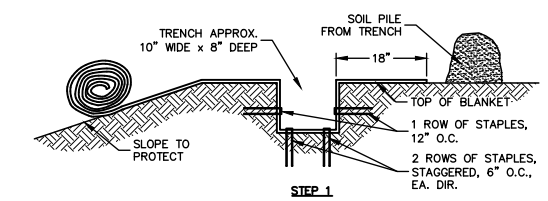
SLOPE TRENCHING METHOD "A"
NO SCALE



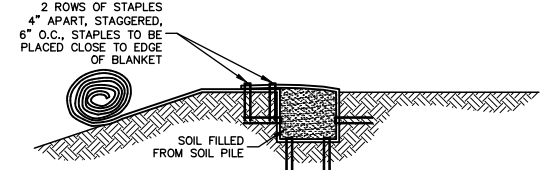
END ROLL OVERLAP
NO SCALE



BOTTOM OF SLOPE TERMINATION
NO SCALE



STEP 1



STEP 2

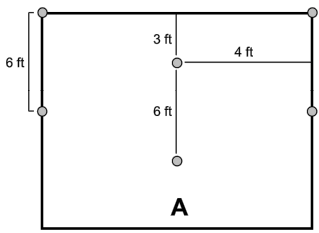
SLOPE TRENCHING METHOD "B"
NO SCALE

Curlex® Staple Pattern Guide

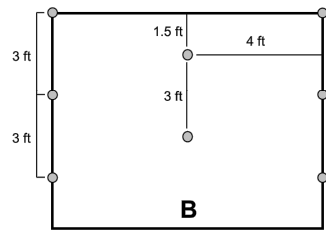
For 8 ft wide Curlex Erosion Control Blankets
Adjust horizontal staple spacing for 4 ft and 16 ft wide Curlex Erosion Control Blankets

Application	Slope		
	≤ 4H:1V	≤ 3H:1V	≤ .5H:1V
Staple Pattern	A	B	C

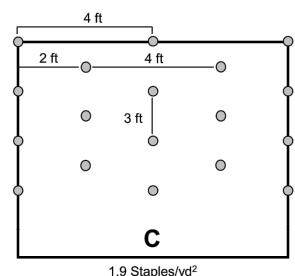
○ = Staple Placement



0.6 Staples/yd²

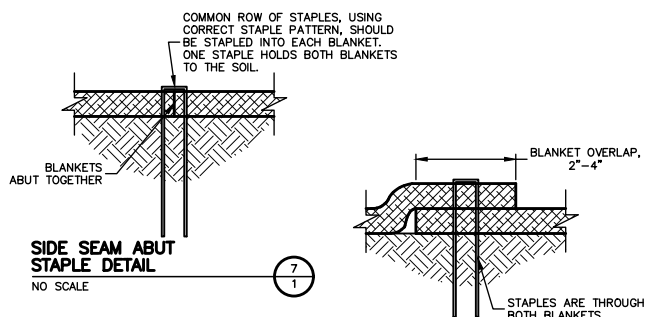


1.1 Staples/yd²

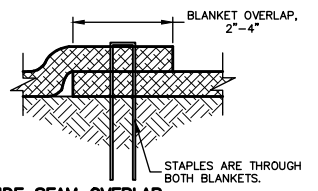


1.9 Staples/yd²

Notes:
1. Recommended staples are a minimum 4 in biodegradable E-Staple®, as provided by American Excelsior Company, or 6 in wire for cohesive soils and 6 in biodegradable E-Staple®, as provided by American Excelsior Company, or 8 in wire for non-cohesive soils.
2. For best results insert staples so heads are parallel to the flow of water.



SIDE SEAM ABUT STAPLE DETAIL
NO SCALE



SIDE SEAM OVERLAP STAPLE DETAIL
NO SCALE

