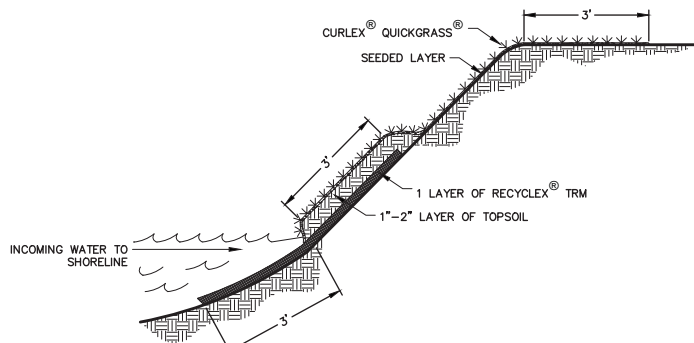
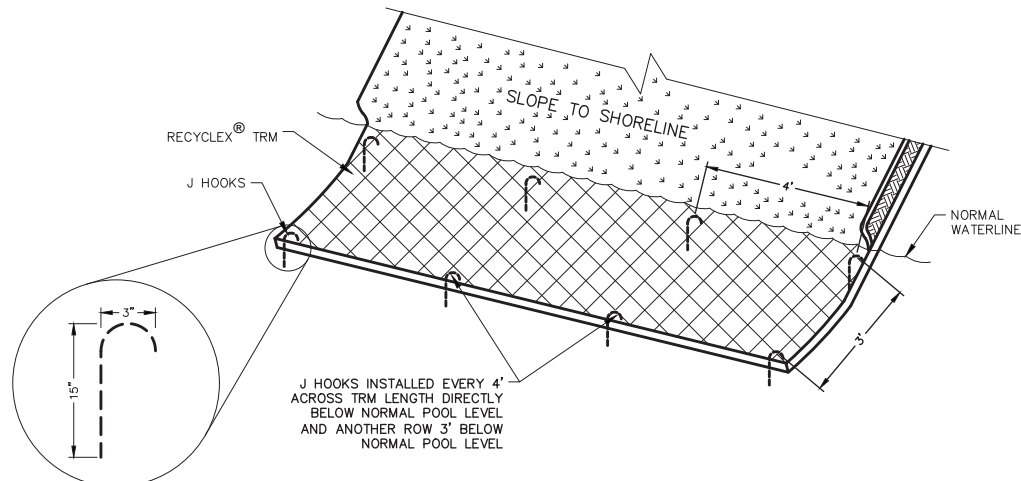


3D APPLICATION VIEW 1
20
NO SCALE



CROSS SECTION DETAIL 2
20
NO SCALE



J HOOK DETAIL 3
20
NO SCALE

- NOTE:
- 1) INSTALL LAYER OF RECYCLEX® TRM 8' WIDTH, APPROXIMATELY 3' BELOW NORMAL POOL & 3' ABOVE NORMAL POOL.
 - 2) INSTALL #3 (3/8) REBAR J-HOOKS (15" LENGTH WITH 3" CROWN) BELOW WATERLINE ALONG THE OUTSIDE EDGE OF RECYCLEX® TRM EVERY 4 LINEAL FEET AND REPEAT AT EDGE OF THE WATERLINE.
 - 3) ABOVE THE WATERLINE ANCHOR THE RECYCLEX® TRM LAYER.
 - 4) ABOVE WATERLINE, SOIL FILL TOPSOIL OVER RECYCLEX® TRM SO IT INTERMINGLES INTO AND ABOVE THE PERMANENT MATRIX 1"-2".
 - 5) SEED TOPSOIL LAYER THAT WAS PLACED ON TOP OF RECYCLEX® TRM AND REMAINDER OF DISTURBED SLOPE WITH A MIXTURE SUITED FOR SITE CONDITIONS.
 - 6) BEGINNING AT THE WATERLINE INSTALL CURLEX® QUICKGRASS® BLANKETS OVER THE SEED/TOPSOIL LAYER TO PROMOTE IDEAL GROWING CONDITIONS FOR GRASS SEED ON THE SLOPE ABOVE THE WATERLINE. TO PROTECT THE REMAINING BARE SOIL CONTINUE THE INSTALLATION OF CURLEX® QUICKGRASS® BLANKETS UNTIL IT HAS REACHED 3' OVER THE CREST OF THE SLOPE AND ANCHOR.
 - 7) STAPLE PATTERNS ARE DEPENDENT ON SITE CONDITIONS. SEE CURLEX® AND RECYCLEX® TRM STAPLE PATTERN GUIDES FOR DETAILS.

