



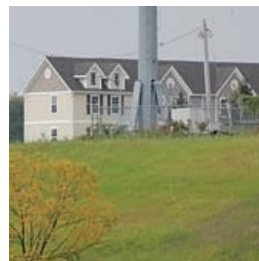
# How Green is Your Footprint?<sup>®</sup>

## American Excelsior's Eco-Sustainable<sup>™</sup> Products

### Sustainable



**Curlex<sup>®</sup> and Straw** — ECB's led by Curlex products. First photo shows product after application. Second photo shows vegetation growing through product.



**Curlex<sup>®</sup> Sediment Log<sup>®</sup>** — Filter contaminated runoff, retain sediment, reduce velocity using biodegradable fibers.

### Environmentally Friendly



ECB's made with **Ecocycle<sup>™</sup>** Technology and Curlex with **NatureZone<sup>™</sup>** Nettings.



**Bindex<sup>™</sup> Family of Hydraulic Mulches** with Curlex Fibers for hydraulic applications.

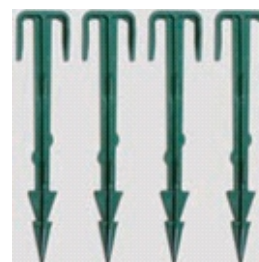


**Curlex<sup>®</sup> NetFree<sup>™</sup>** — ECB without netting and made from biodegradable wood fibers.

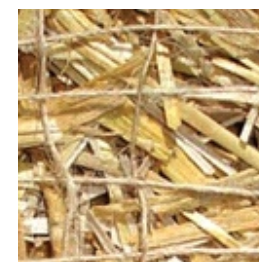
### 100% Biodegradable



**Curlex<sup>®</sup> NetFree<sup>™</sup>** — ECB without netting and made from biodegradable wood fibers.



**E-Staple<sup>®</sup>** — Biodegradable staple to anchor rolled erosion control products to the soil.

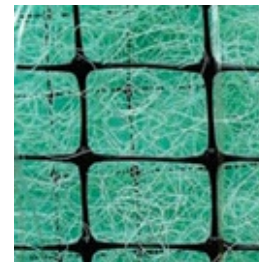


AEC's **FibreNet<sup>™</sup>** product line

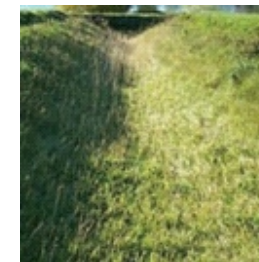
### Recycled Materials



Approximately twenty (20) plastic bottles are diverted from landfills for every pound of **Recyclex<sup>®</sup>** fibers.



**Recyclex<sup>®</sup> TRM and TRM - V** — Fibers made from 100% post-consumer goods (recycled bottles).



Vegetated **Recyclex<sup>®</sup> TRM** channel

**American Excelsior Company<sup>®</sup>**  
Earth Science Division

850 Avenue H East  
Arlington, Texas 76011  
Phone 1-800-777-SOIL  
Fax 817-385-3585  
www.Curlex.com



# How Green is Your Footprint?<sup>®</sup>

## American Excelsior's Eco-Sustainable<sup>™</sup> Products

Sustainable,  
Environmentally  
Friendly, 100%  
Biodegradable,  
Recycled Erosion  
and Sediment  
Control Products

With the increasing need to protect our environment and meet federal regulations, wouldn't it be nice to have just one source to provide you with all your erosion and sediment control products and design needs? With American Excelsior's new **Eco-Sustainable line**, you now have a family of products backed by proven performance.

### LEED<sup>®</sup> Points

American Excelsior Company has established its Eco-Sustainable Product line to help site owners earn LEED points. Our products can help contribute toward U.S. Green Council's Leadership in Energy and Environmental Design (LEED) Green Building Rating System<sup>™</sup> points to help your project achieve its Leed Certification. See our LEED Brochure or contact us for more details.

### American Excelsior Company Will Help You Leave a Green Footprint on Your Next Design Project

### ErosionWorks<sup>®</sup>

Recently updated Rainfall and Channel Erosion Analysis & Design software. ErosionWorks allows you to design and analyze your site and recommends successful solutions to match your project's requirements.

### New features include:

- Good, Better, Best product recommendations
- Options of 100% biodegradable and desired functional longevity
- Material Estimator including quantities and budget costs
- Sediment Control products incorporated into slope analysis
- Report capabilities including your own savable/retrievable "my reports" section
- [www.ErosionWorks.com](http://www.ErosionWorks.com)

### ErosionLab<sup>®</sup>

ErosionLab has focused on industry-wide advancement since it opened and is the largest privately owned testing facility of its type in the world. The goal of the lab continues to be advancement through education. Testing of erosion and sediment control products, educational field days, and research and development processes are only a few of the activities that help ErosionLab achieve its goal. ErosionLab is viewed by many organizations as an industry leader demonstrating commitment on behalf of the erosion control industry.



American  
Excelsior  
Company<sup>®</sup>  
Earth Science Division

850 Avenue H East  
Arlington, Texas 76011  
Phone 1-800-777-SOIL  
Fax 817-385-3585  
[www.Curlex.com](http://www.Curlex.com)

TRUSTED. TESTED. PROVEN.

Form# 305/051917E