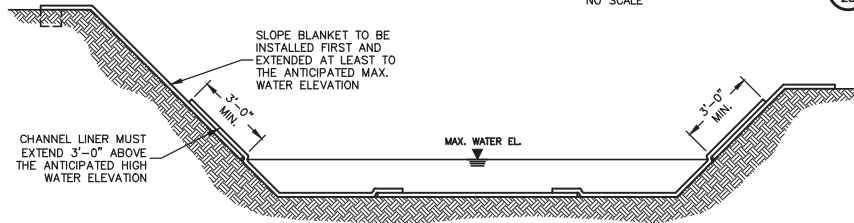
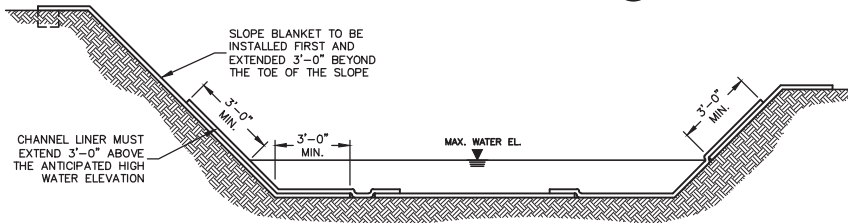


**NOTES:**

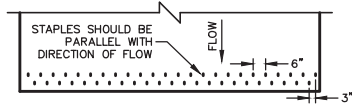
1. SEE CURLEX® CL SLOPE APPLICATION DETAIL SHEET FOR PROPER SLOPE INSTALLATION.



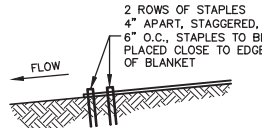
**CHANNEL INSTALLATION METHOD "A"**  
NO SCALE



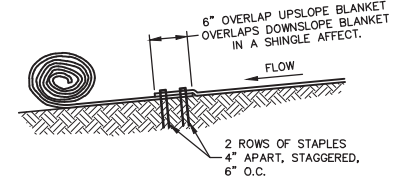
**CHANNEL INSTALLATION METHOD "B"**  
NO SCALE



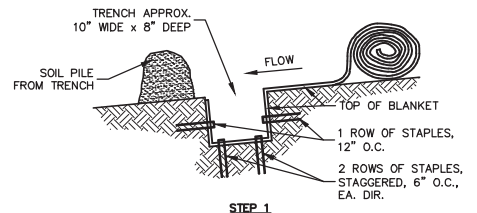
**CHANNEL TERMINATION PLAN**  
NO SCALE



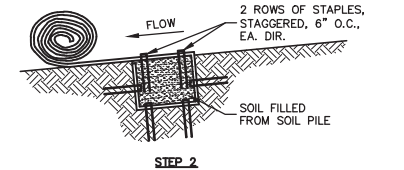
**CHANNEL TERMINATION**  
NO SCALE



**CHANNEL BLANKET END OF ROLL OVERLAP**  
NO SCALE

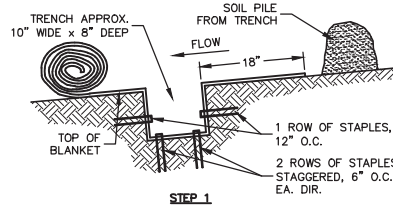


**STEP 1**

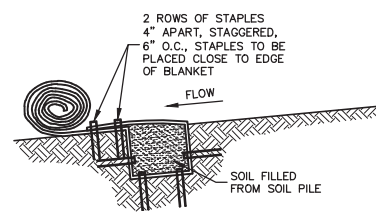


**STEP 2**

**CHANNEL TRENCHING METHOD "A"**  
NO SCALE



**STEP 1**



**STEP 2**

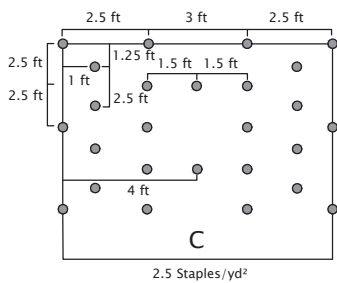
**CHANNEL TRENCHING METHOD "B"**  
NO SCALE

**Curlex® CL Staple Pattern Guide**

For 8 ft wide Curlex CL Erosion Control Blankets  
Adjust horizontal staple spacing for 4 ft and 16 ft wide Curlex Erosion Control Blankets

Application	Channel
	≤ 1.80 lb/ft <sup>2</sup> (86 Pa) Shear Stress
	≤ 7.8 ft/sec (2.2 m/sec) Velocity
Staple Pattern	C

● = Staple Placement



Notes:

1. Recommended staples are minimum 4 in biodegradable E-Staples®, as provided by American Excelsior Company, or 6 in wire for cohesive soils and 6 in biodegradable E-Staples®, as provided by American Excelsior Company, or 8 in wire for non-cohesive soils.
2. For best results insert staples so heads are parallel to the flow of water.
3. Adjust staple pattern so staples are placed in critical channel points (e.g. slope interface, channel bottom) as illustrated below.

Critical channel points are circled.

