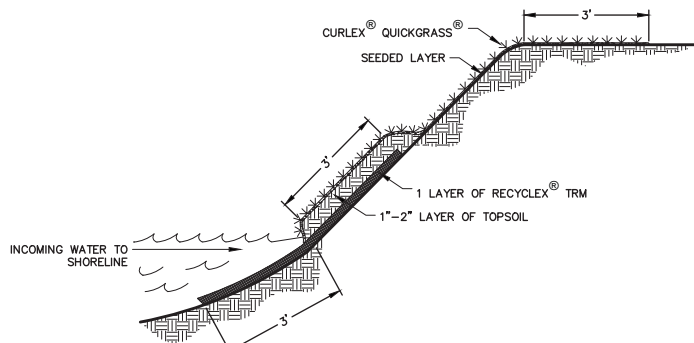
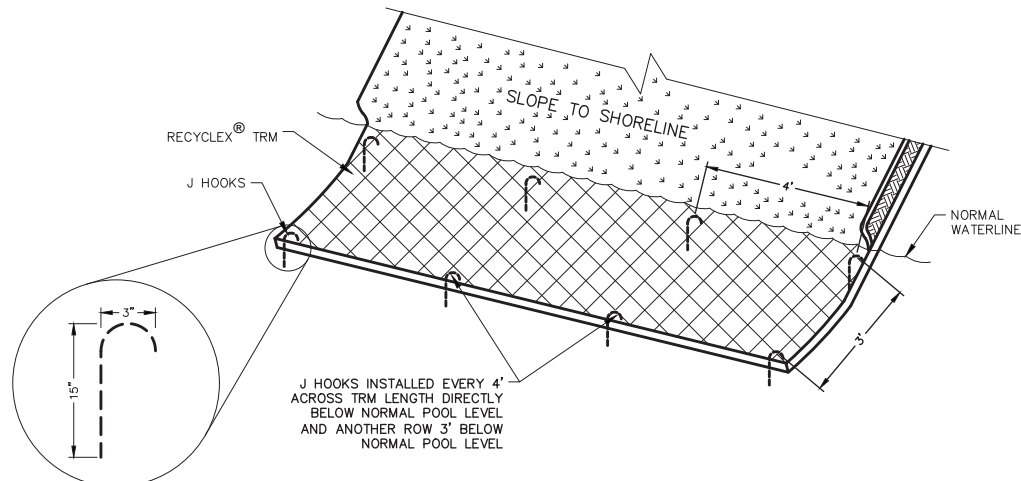


**3D APPLICATION VIEW** 1  
20  
NO SCALE



**CROSS SECTION DETAIL** 2  
20  
NO SCALE



**J HOOK DETAIL** 3  
20  
NO SCALE

**NOTE:**

- 1) INSTALL LAYER OF RECYCLEX® TRM 8' WIDTH, APPROXIMATELY 3' BELOW NORMAL POOL & 3' ABOVE NORMAL POOL.
- 2) INSTALL #3 (3/8) REBAR J-HOOKS (15" LENGTH WITH 3" CROWN) BELOW WATERLINE ALONG THE OUTSIDE EDGE OF RECYCLEX® TRM EVERY 4 LINEAL FEET AND REPEAT AT EDGE OF THE WATERLINE.
- 3) ABOVE THE WATERLINE ANCHOR THE RECYCLEX® TRM LAYER.
- 4) ABOVE WATERLINE, SOIL FILL TOPSOIL OVER RECYCLEX® TRM SO IT INTERMINGLES INTO AND ABOVE THE PERMANENT MATRIX 1"-2".
- 5) SEED TOPSOIL LAYER THAT WAS PLACED ON TOP OF RECYCLEX® TRM AND REMAINDER OF DISTURBED SLOPE WITH A MIXTURE SUITED FOR SITE CONDITIONS.
- 6) BEGINNING AT THE WATERLINE INSTALL CURLEX® QUICKGRASS® BLANKETS OVER THE SEED/TOPSOIL LAYER TO PROMOTE IDEAL GROWING CONDITIONS FOR GRASS SEED ON THE SLOPE ABOVE THE WATERLINE. TO PROTECT THE REMAINING BARE SOIL CONTINUE THE INSTALLATION OF CURLEX® QUICKGRASS® BLANKETS UNTIL IT HAS REACHED 3' OVER THE CREST OF THE SLOPE AND ANCHOR.
- 7) STAPLE PATTERNS ARE DEPENDENT ON SITE CONDITIONS. SEE CURLEX® AND RECYCLEX® TRM STAPLE PATTERN GUIDES FOR DETAILS.



**AMERICAN EXCELSIOR COMPANY**  
ARLINGTON, TEXAS

SHEET DESCRIPTION  
**SINGLE RECYCLEX®/CURLEX® SYSTEM**  
SHORELINE PROTECTION DETAIL

DATE 3/20/17  
SCALE NONE

DRAWN BY  
PROJECT NO. SHEET NO.  
20