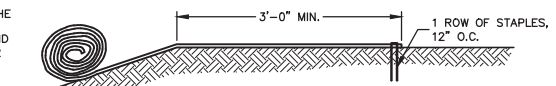
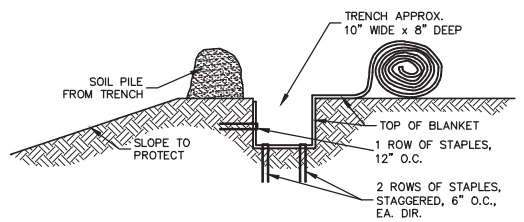


**SLOPE DETAIL**  
NO SCALE

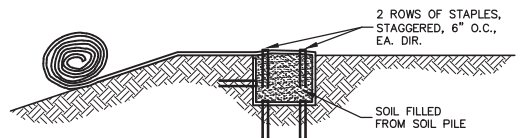


**OVER SLOPE CREST METHOD**  
NO SCALE

DO NOT NEED TO TRENCH BLANKET IN IF IT CAN BE EXTENDED A MINIMUM OF 3'-0" OVER THE CREST OF THE SLOPE.

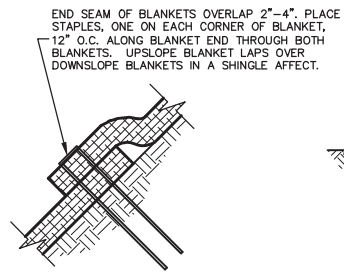


STEP 1

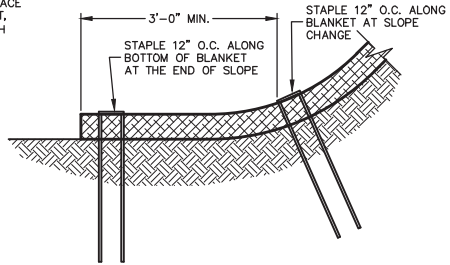


STEP 2

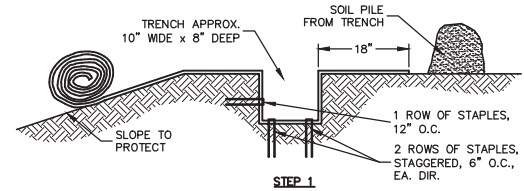
**SLOPE TRENCHING METHOD "A"**  
NO SCALE



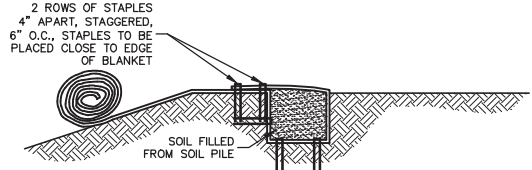
**END ROLL OVERLAP**  
NO SCALE



**BOTTOM OF SLOPE TERMINATION**  
NO SCALE



STEP 1



STEP 2

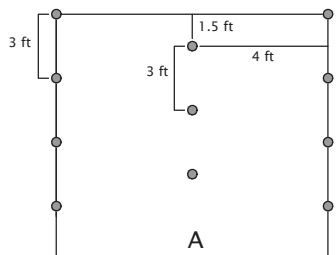
**SLOPE TRENCHING METHOD "B"**  
NO SCALE

**TriNet™ Coconut Turf Reinforcement Mat (TRM) Staple Pattern Guide**

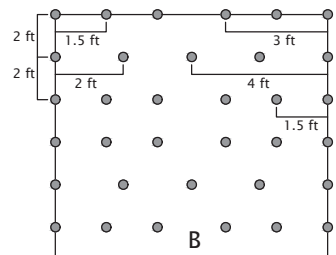
For 8 ft wide TriNet TRM  
Adjust horizontal staple spacing for 16ft wide TRM

Application	Slope	
	≤ 3H:1V	≤ 5H:1V
Staple Pattern	A	B

● = Staple Placement



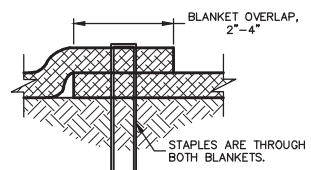
1.2 Staples/yd<sup>2</sup>



3.3 Staples/yd<sup>2</sup>

Notes:

- For cohesive soil use a 6 in wire staple and for non-cohesive soil use an 8 in wire staple.
- For best results insert staples so heads are parallel to the flow of water.



**SIDE SEAM OVERLAP STAPLE DETAIL**  
NO SCALE

