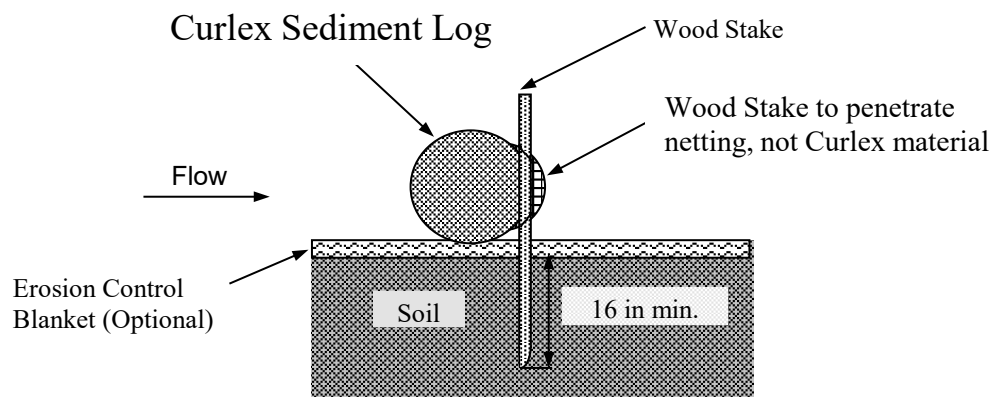
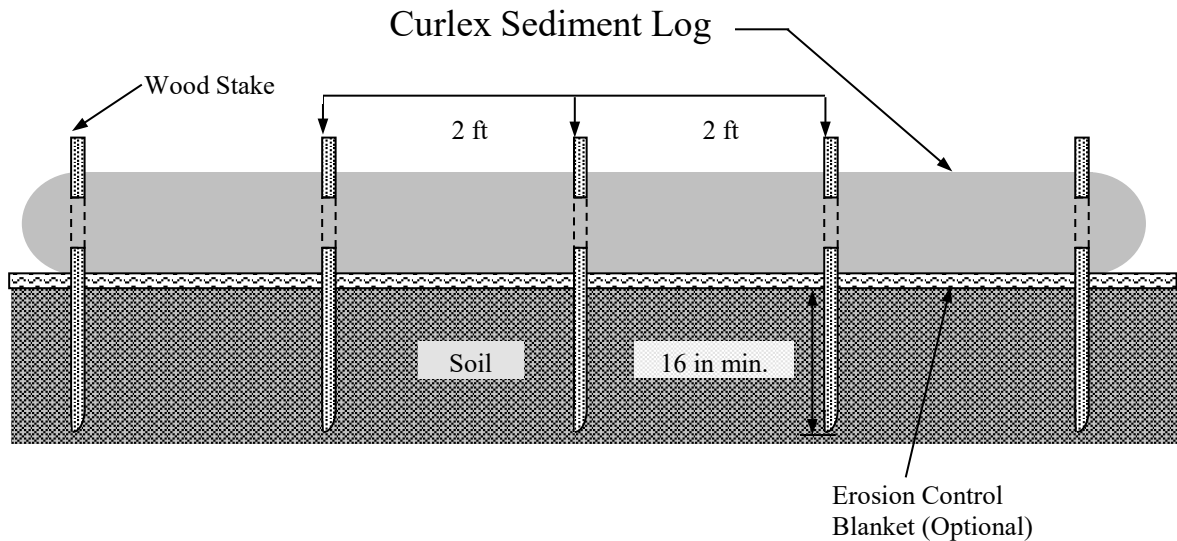


Curlex® Sediment Log® Staking Pattern Guide



Notes:

1. Drawing not to scale.
2. Recommended stakes are wooden 1 1/8 in wide x 1 1/8 in thick by a minimum of 30 in long for 6 in, 9 in, and 12 in Curlex Sediment Logs and 48 in long for 20 in Curlex Sediment Logs.
3. 6 in and 9 in Curlex Sediment Logs may also be anchored with E-Staples®, 1 in x 6 in, U-shaped, 11 gauge wire staples, or 2 in x 8 in, U-shaped, 8 gauge wire staples.