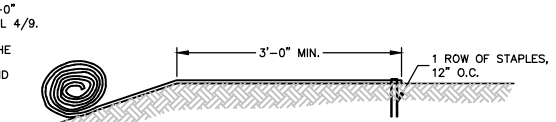
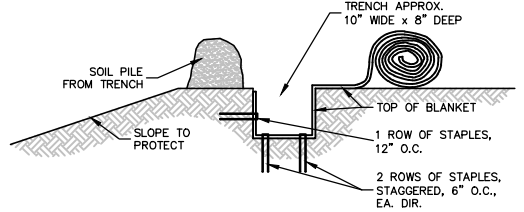


SLOPE DETAIL
NO SCALE

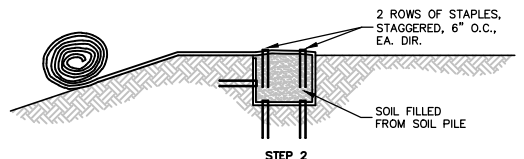


OVER SLOPE CREST METHOD
NO SCALE

DO NOT NEED TO TRENCH BLANKET IN IF IT CAN BE EXTENDED A MINIMUM OF 3'-0" OVER THE CREST OF THE SLOPE.

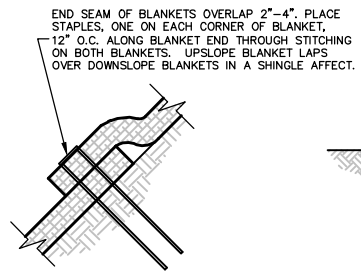


STEP 1

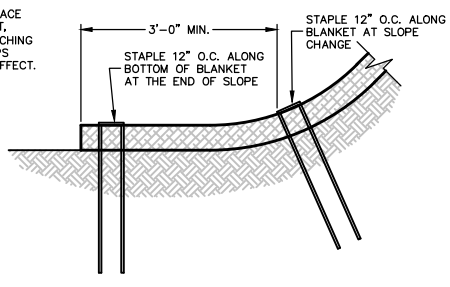


STEP 2

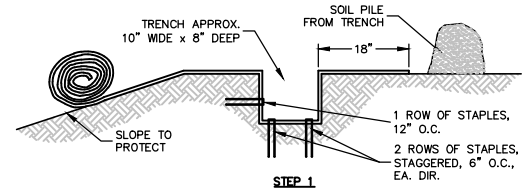
SLOPE TRENCHING METHOD "A"
NO SCALE



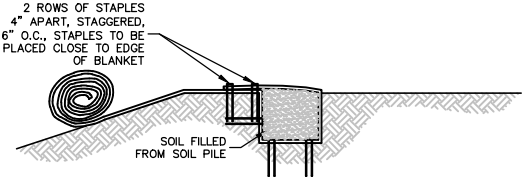
END ROLL OVERLAP
NO SCALE



BOTTOM OF SLOPE TERMINATION
NO SCALE



STEP 1



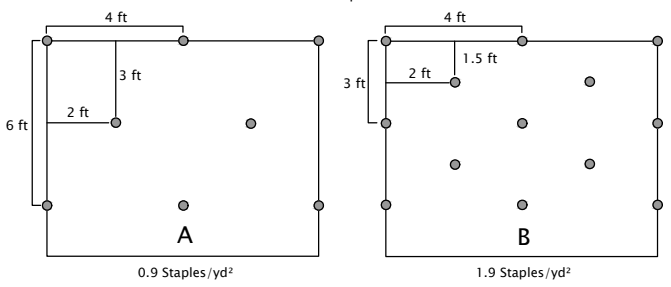
STEP 2

SLOPE TRENCHING METHOD "B"
NO SCALE

Curlex® NetFree™ Staple Pattern Guide

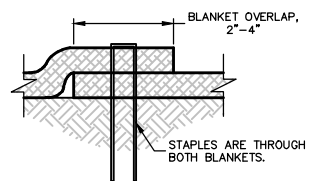
Application	Slope	
	≤ 4H:1V	≤ 3H:1V
Staple Pattern	A	B

● = Staple Placement



Notes:

1. Recommended staples include 6 in long steel or 4 in long 100% biodegradable E-Staple®, as provided by American Excelsior Company, for cohesive soils and 8 in long steel staples or 6 in long 100% biodegradable E-staple®, as provided by American Excelsior Company, for non-cohesive soils.
2. Staples shall be placed on a stitch line and for best results insert staples so heads are parallel to the flow of water.
3. Adjust staple pattern so staples are placed in critical slope points (e.g. slope change)



SIDE SEAM OVERLAP STAPLE DETAIL
NO SCALE