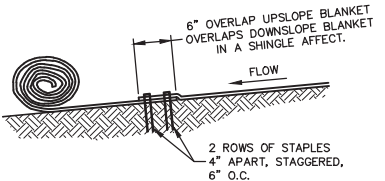
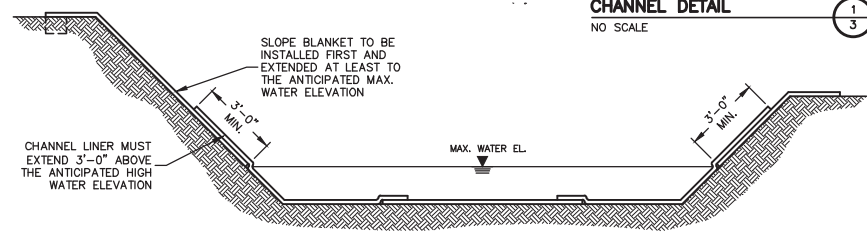


NOTES:
 1. SEE CURLEX® SLOPE APPLICATION DETAIL SHEET FOR PROPER SLOPE INSTALLATION.

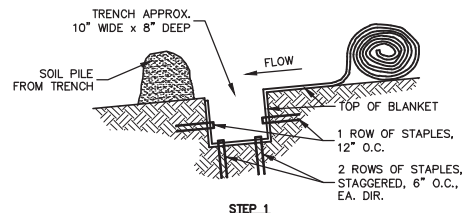
SIDE SEAM OVERLAP STAPLE DETAIL
 NO SCALE



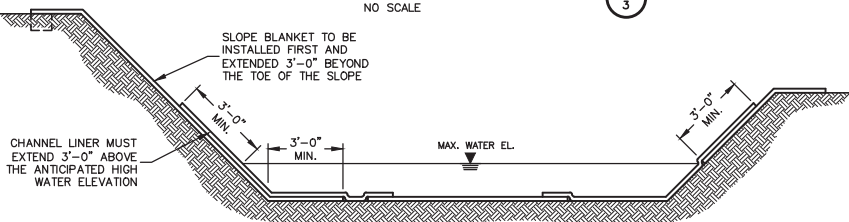
CHANNEL BLANKET END OF ROLL OVERLAP
 NO SCALE



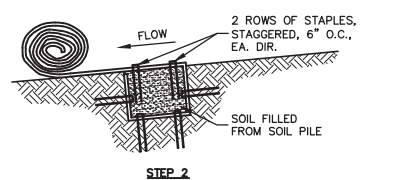
CHANNEL INSTALLATION METHOD "A"
 NO SCALE



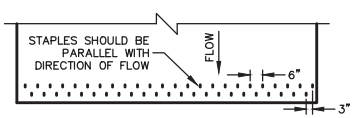
STEP 1



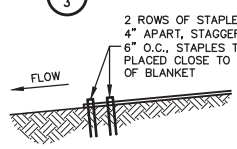
CHANNEL INSTALLATION METHOD "B"
 NO SCALE



STEP 2

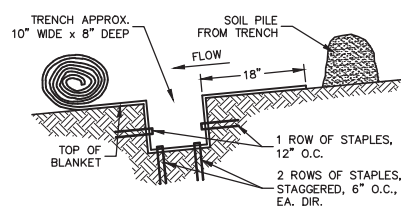


CHANNEL TERMINATION PLAN
 NO SCALE



CHANNEL TERMINATION
 NO SCALE

CHANNEL TRENCHING METHOD "A"
 NO SCALE

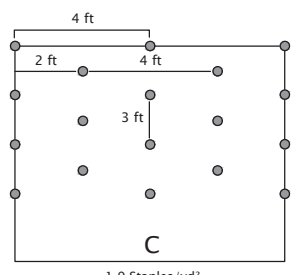


STEP 1

Curlex® Staple Pattern Guide
 For 8 ft wide Curlex Erosion Control Blankets
 Adjust horizontal staple spacing for 4 ft and 16 ft wide Curlex Erosion Control Blankets

	Channel
Application	≤ 10.0 lb/ft ² (480 Pa) Shear Stress ≤ 17 ft/sec (5.2 m/sec) Velocity
Staple Pattern	C

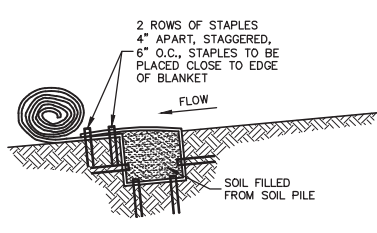
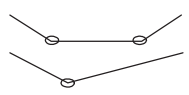
● = Staple Placement



Notes:

1. Recommended staples are minimum 4 in biodegradable E-Staple®, as provided by American Excelsior Company, or 6 in wire for cohesive soils and 6 in biodegradable E-staple®, as provided by American Excelsior Company, or 8 in wire for non-cohesive soils.
2. For best results insert staples so heads are parallel to the flow of water.
3. Adjust staple pattern so staples are placed in critical channel points (e.g. slope interface, channel bottom) as illustrated below.

Critical channel points are circled.



STEP 2

CHANNEL TRENCHING METHOD "B"
 NO SCALE

