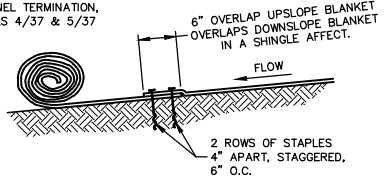
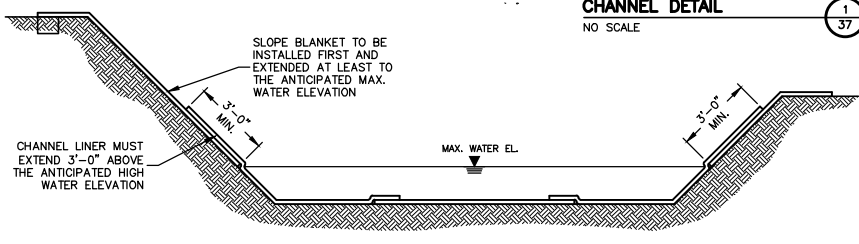


SIDE SEAM OVERLAP STAPLE DETAIL
NO SCALE

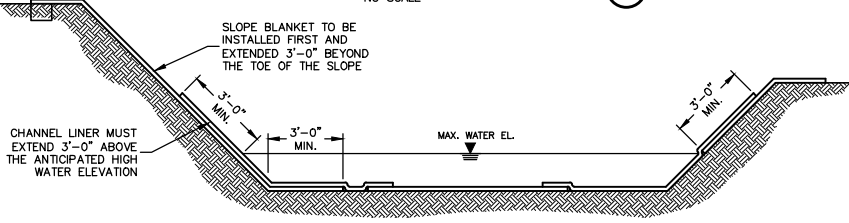
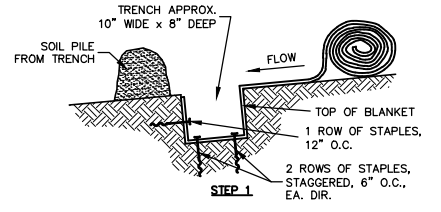
NOTES:
1. SEE TriNet® CURLEX® SLOPE APPLICATION DETAIL SHEET FOR PROPER SLOPE INSTALLATION.



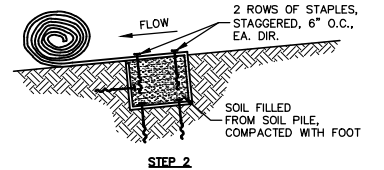
CHANNEL BLANKET END OF ROLL OVERLAP
NO SCALE



CHANNEL INSTALLATION METHOD "A"
NO SCALE



CHANNEL INSTALLATION METHOD "B"
NO SCALE



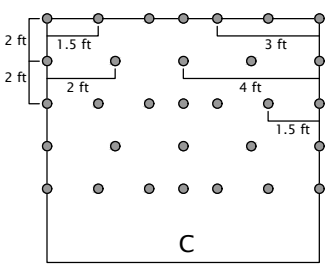
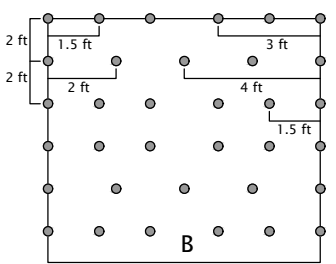
CHANNEL TRENCHING METHOD "A"
NO SCALE

TriNet® Curlex® Turf Reinforcement Mat (TRM) Staple Pattern Guide

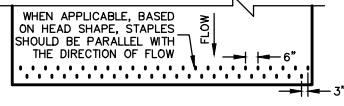
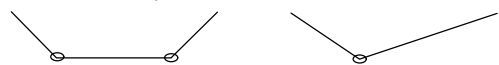
For 8 ft wide TriNet TRM
Adjust horizontal staple spacing for 16ft wide TRM

Application	Channel	
	≤ 3.0 lb/ft² (1.44 Pa) Shear Stress ≤ 1.2.0 ft/sec (3.66 m/sec) Velocity	≤ 1.3 lb/ft² (6.22 Pa) Shear Stress ≤ 20.0 ft/sec (6.1 m/sec) Velocity
Staple Pattern	B	C

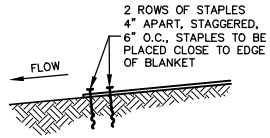
● = Staple Placement



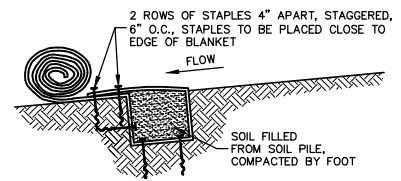
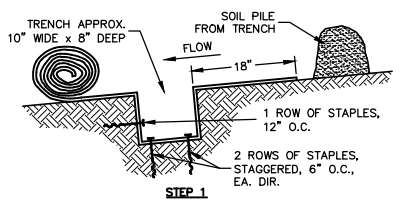
- Notes:**
- For tough/cohesive soil, use TL-TA2 Gripple twist anchors; for moderate/non-cohesive soil, use TL-TA1 Gripple twist anchors.
 - Adjust staple pattern so staples are placed in critical channel points (e.g. slope interface, channel bottom) as illustrated below:



CHANNEL TERMINATION PLAN
NO SCALE



CHANNEL TERMINATION
NO SCALE



CHANNEL TRENCHING METHOD "B"
NO SCALE