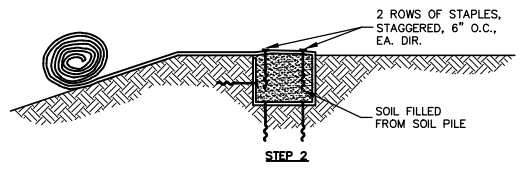
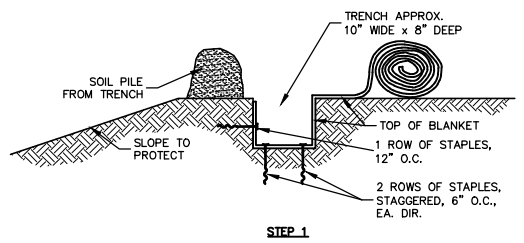
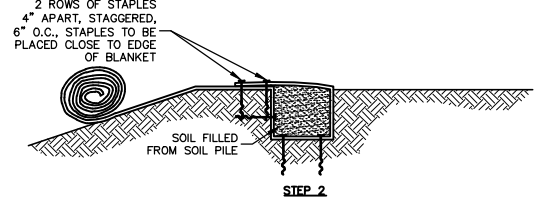
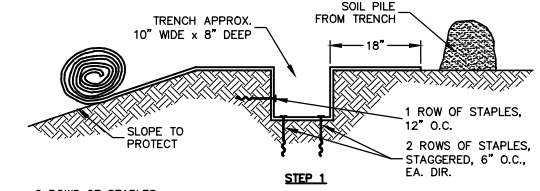
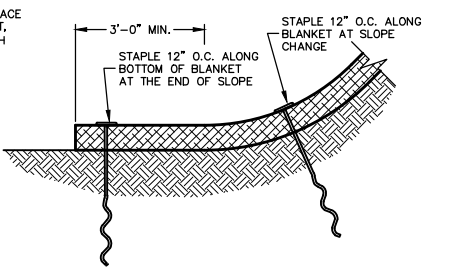
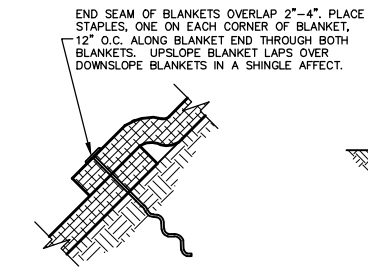


DO NOT NEED TO TRENCH BLANKET IN IF IT CAN BE EXTENDED A MINIMUM OF 3'-0" OVER THE CREST OF THE SLOPE.



**SLOPE TRENCHING METHOD "A"**  
NO SCALE



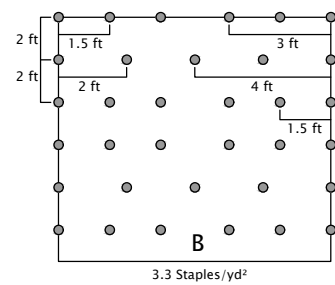
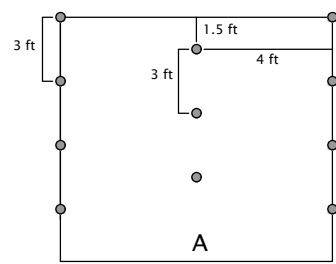
**SLOPE TRENCHING METHOD "B"**  
NO SCALE

**TriNet® Straw/Coconut Turf Reinforcement Mat (TRM) Staple Pattern Guide**

For 8 ft wide TriNet TRM  
Adjust horizontal staple spacing for 16ft wide TRM

Application	Slope	
	≤ 3H:1V	≤ .5H:1V
Staple Pattern	A	B

● = Staple Placement



Notes:  
1. For tough/cohesive soil, use TL-TA2 Gripple twist anchors; for moderate/non-cohesive soil, use TL-TA1 Gripple twist anchors.

