

# How Green is Your Footprint?<sup>®</sup>

## American Excelsior's Eco-Sustainable™ Products

### Sustainable



**Curlex® and Straw** - ECB's led by Curlex products. First photo shows product after application. Second photo shows vegetation growing through product.



**Curlex® Sediment Log®** - Filter contaminated runoff, retain sediment, reduce velocity using biodegradable fibers.

### Environmentally Friendly



ECB's made with **Ecocycle™** Technology and Curlex with **NatureZone™** Nettings.



**Bindex™** Family of Hydraulic Mulches with Curlex Fibers for hydraulic applications.



Curlex Net ree - ECB without netting and made from biodegradable wood fibers.

### 100% Biodegradable



**Curlex NetFree™** — ECB without netting and made from biodegradable wood fibers.

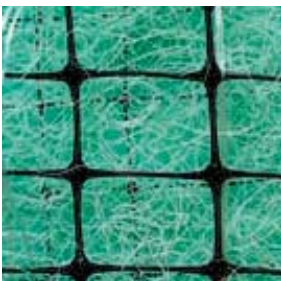


**E-Staple®** — Biodegradable staple to anchor rolled erosion control products to the soil.



AEC's **FibreNet™** product line

### Recycled Materials





850 Avenue H E  
Arlington, Texas 76011

Phone: 800-777-SOIL  
[www.Curlex.com](http://www.Curlex.com)

THE MOST TRUSTED NAME IN EROSION  
CONTROL Form #017 / W0420R0420