

Bindex™ Wood / Excel® Fibermulch II Bindex™ Wood WT / Excel® Fibermulch II with Tack



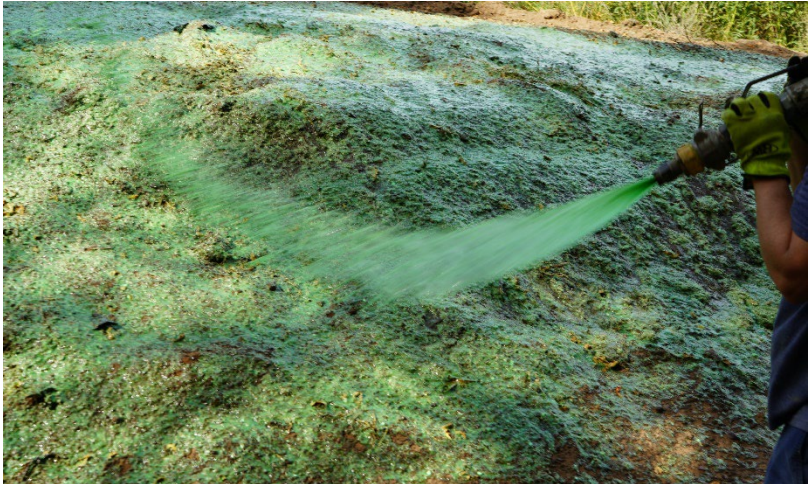
It only makes sense that you would trust your hydraulic mulch requirements to a company who dates back to 1888, and who has been producing quality erosion control products for over 60 years. Bindex Wood / Excel Fibermulch II and Bindex Wood WT / Excel Fibermulch II with tackifier are mulch products you can count on. Just like the quality of Curlex Excelsior, Recyclex TRM family, and TriNet TRM family of Erosion Control Blankets (ECBs) and Turf Reinforcement Mats (TRMs), you can be assured of a high-quality mulch to provide trouble free application.

Material Characteristics

Bindex Wood and Excel Fibermulch II are made from all natural, Aspen wood fibers (no blending of unknown outside materials). Both hydraulically applied mulches provide a cover to protect seeds, enhance germination, and hasten revegetation when mixed with water and applied with hydraulic mulching equipment. The natural aspen wood fibers are a nutrient from nature that adds nourishment to the soil. It is a free-flowing product that allows for a uniform mix, which creates a "blanket-like" effect to aid in the germination process.

Typical Applications

- Highway Slopes and Medians
- Residential Development
- Commercial Development
- Industrial Development
- Utility Transmission Right-of-Way
- Landfill Development
- Golf Course Construction
- Slope Stabilization



Performance Capabilities

Product	Slope Rating	Slope Length	Application Rate
Bindex Wood / Excel Fibermulch II	≤ 4H:1V	20 ft (6.1 m)	≈ 2,000 – 2,500 lb/acre (2,241 – 2,802 kg/ha)
Bindex Wood WT /Excel Fibermulch II with Tackifier	3H:1V	50 ft (15.2 m)	≈ 2,000 – 3,000 lb/acre (2,241 – 3,362 kg/ha)

Packaging

Bindex Wood, Excel Fibermulch II, Bindex Wood WT, and Excel Fibermulch II with Tackifier have a bag volume of 6.25 ft³ (177 L) before compression and 2.8 ft³ (79 L) after compression with an approximate weight of 50 lb per bag. The bags are available palletized for applicator convenience.



Installation

Before applying Bindex Wood, Excel Fibermulch II, Bindex Wood WT, or Excel Fibermulch II with tackifier the finished grade shall be inspected by the Owner's Representative to ensure it has been properly compacted and fine graded to remove existing rills. It shall be free of obstructions, such as tree roots, projections such as stones, and other foreign objects. The contractor shall proceed when all satisfactory conditions are present. Each bag of hydraulically applied mulch should be mixed with the proper volume of water to achieve the desired application rate. Apply hydraulic mulch in multiple directions for best coverage results.

Disclaimer: Bindex Wood, Excel Fibermulch II, Bindex Wood WT, and Excel Fibermulch II with Tackifier Hydraulic Mulches are systems for erosion control and re-vegetation on slopes. American Excelsior Company (AEC) believes that the information contained herein to be reliable and accurate for use in erosion control and re-vegetation applications. However, since physical conditions vary from job site to job site and even within a given job site, AEC makes no performance guarantees and assumes no obligation or liability for the reliability or accuracy of information contained herein for the results, safety or suitability of using Bindex Wood, Excel Fibermulch II, Bindex Wood WT, and Excel Fibermulch II with Tackifier Hydraulic Mulches, or for damages occurring in connection with the installation of any erosion control product whether or not made by AEC or its affiliates, except as separately and specifically made in writing.