

Curlex® Hi-Vis Excelsior Logs™

Product Description

Durable, high visibility solution with Curlex fibers



Curlex Hi-Vis Excelsior Logs are easy to move with their durable handles. But, the best part of them is what you don't see. These are the only high-visibility logs filled with the naturally seed-free Great Lakes Aspen Curlex fibers that you know and trust.

Curlex fibers provide the highest level of sediment control. Curlex/Curlex fibers are listed with the EPA as an approved/pre-approved sorbent, Curlex fibers also remove hydro- carbons, nutrients, metals, etc.

Applications

- Control site access
- Promote safe on-site driving speeds
- Delineate sensitive areas
- Additional sediment and stormwater control applications
- Stockpile control
- Hazard marker (example: manhole delineation)
- Suitable replacement to safety fencing in certain applications

Benefits

- Hi-Vis shell quickly and safely identifies perimeter
- HD polyethylene shell for long life and durability to reuse across multiple jobsites
- 4 Integrated handles for easy moving
- Proven performance of Curlex fibers
- EPA approved sorbent
- Keeps people away from dangers on site

Containment Sleeve Specifications

Index Property	Test Method	Value
Tensile Strength (MD x TD)	ASTM D4632	267 lb-f x 168 lb-f 1187.7 N x 747.3 N
Elongation at Max Load (MD x TD)	ASTM D4632	66% x 109%
Permittivity	ASTM D4491C	180 GPM/ft ² (7334 L/min/m ²)

Curlex Hi-Vis Excelsior Logs Available Sizes

Product Name	Curlex Hi-Vis 9" x 18'
Nominal Diameter	9 in (22.86 cm)
Starting Sleeve Length	≥18 ft (5.49 m)
Finished Log Length	≥18 ft (5.49 m)



THE MOST TRUSTED NAME IN EROSION CONTROL

Curlex® Hi-Vis Excelsior Logs™

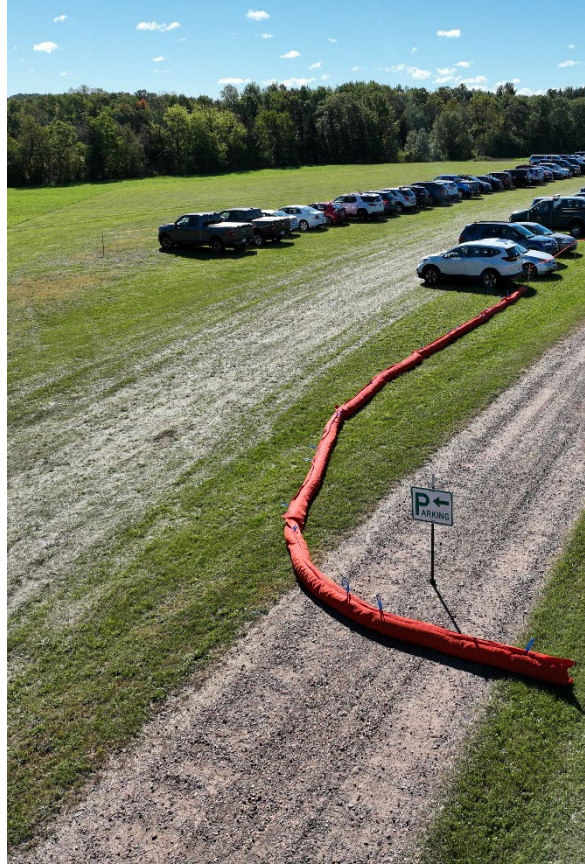
Durable, high visibility solution with Curlex fibers

Product Description

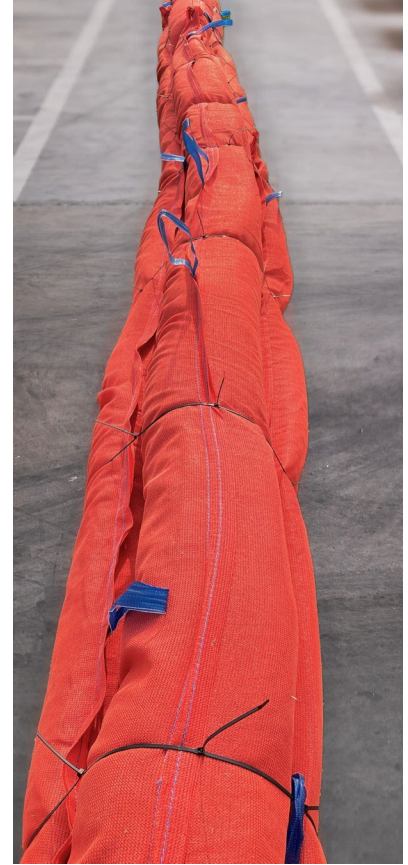
Durable, simple to transport, and easy to use.



Criss-cross staking installation.



Temporary parking lot delineation.



Pyramid stack for increased mass on pavement, hard soil areas, frozen ground, or other applications not conducive to staking.



Stock pile protection.



Caution/safety marker.

