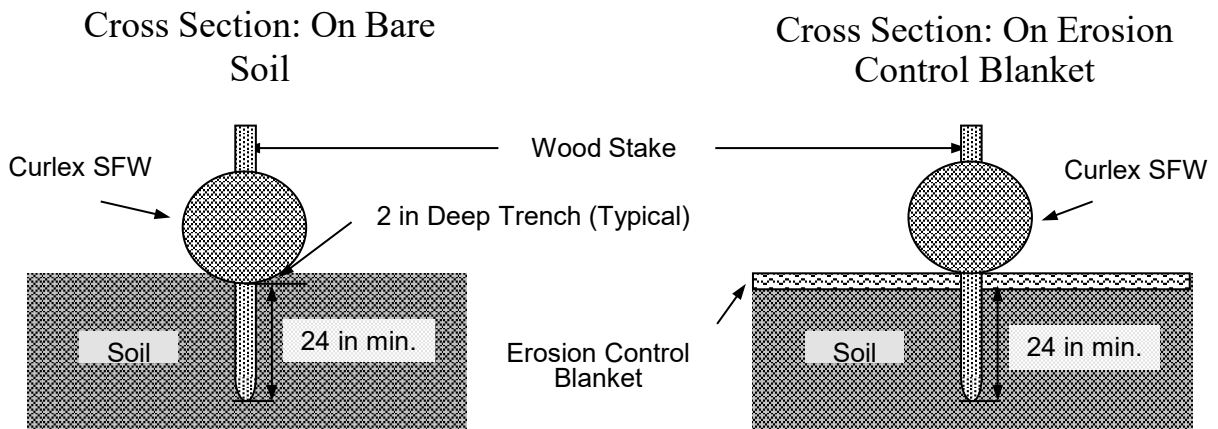
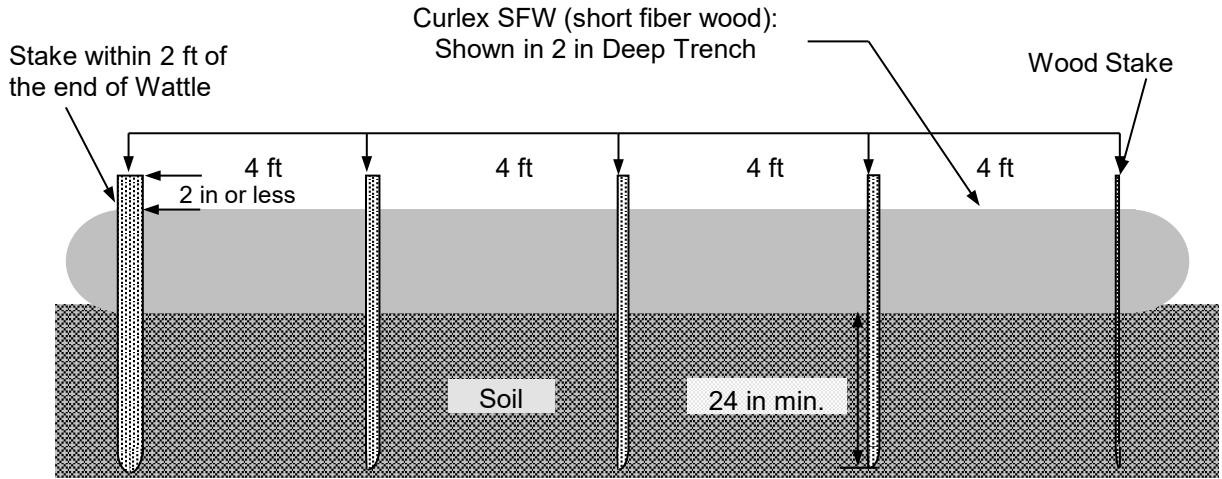


EROSION CONTROL  
TECHNOLOGY COUNCIL  
EST. 1992  
DIRECTING MEMBER



## Curlex® SFW Staking Pattern Guideline



**Notes:**

1. Drawings are not to scale.
2. Ends of product shall be turned slightly up slope.
3. Recommended stakes are wooden 1 1/8 in wide x 1 1/8 in thick by a minimum of 30 in long for 9 in and 12 in Curlex SFW and 48 in long for 20 in Curlex SFW. Stakes shall not extend above the Curlex SFW more than 2 in.