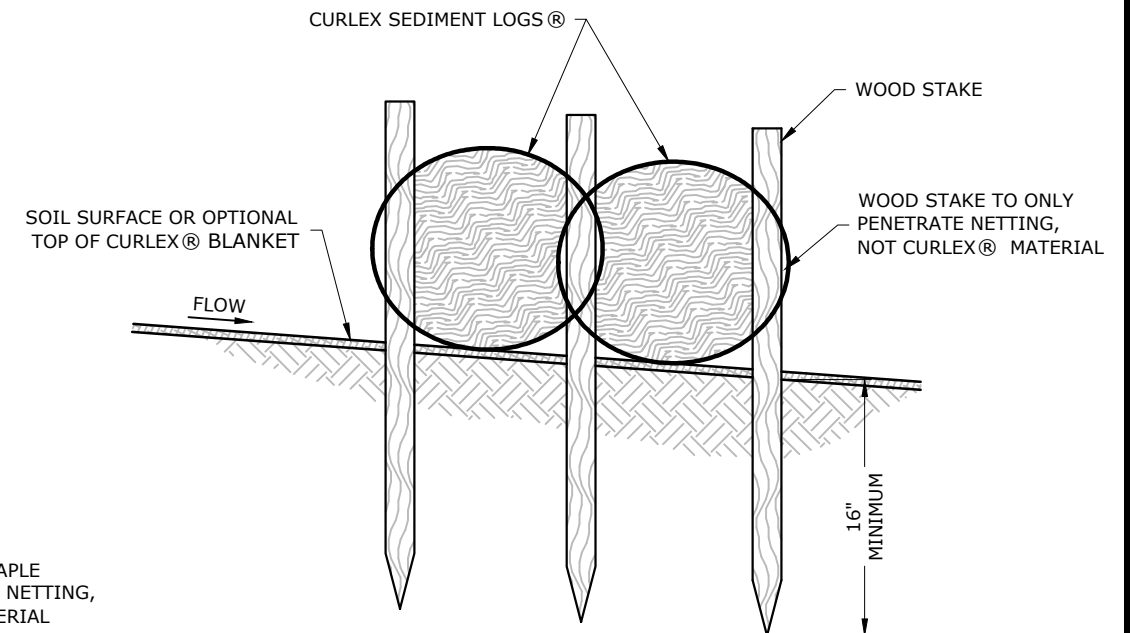


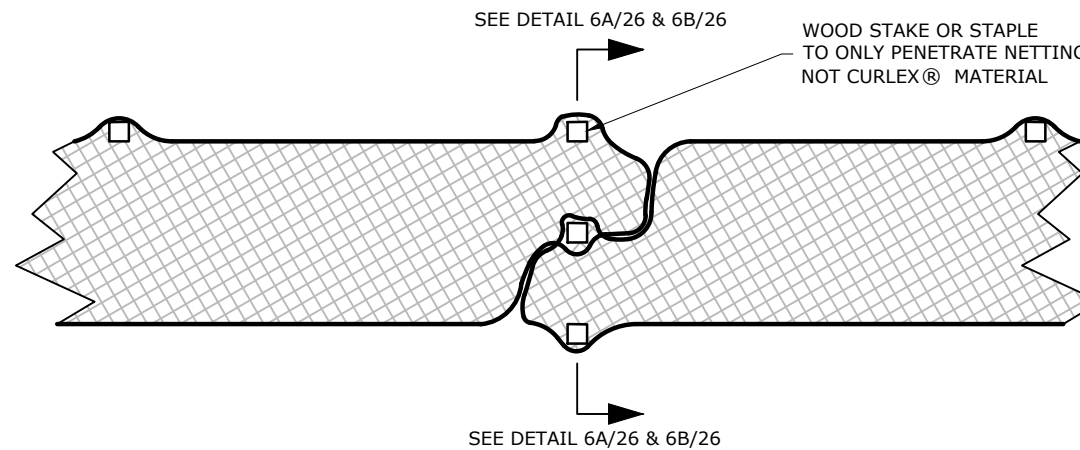
STAKE DETAIL (FRONT VIEW)  
COMMON STAKE ABUTMENT JOINT  
NO SCALE

4A  
26



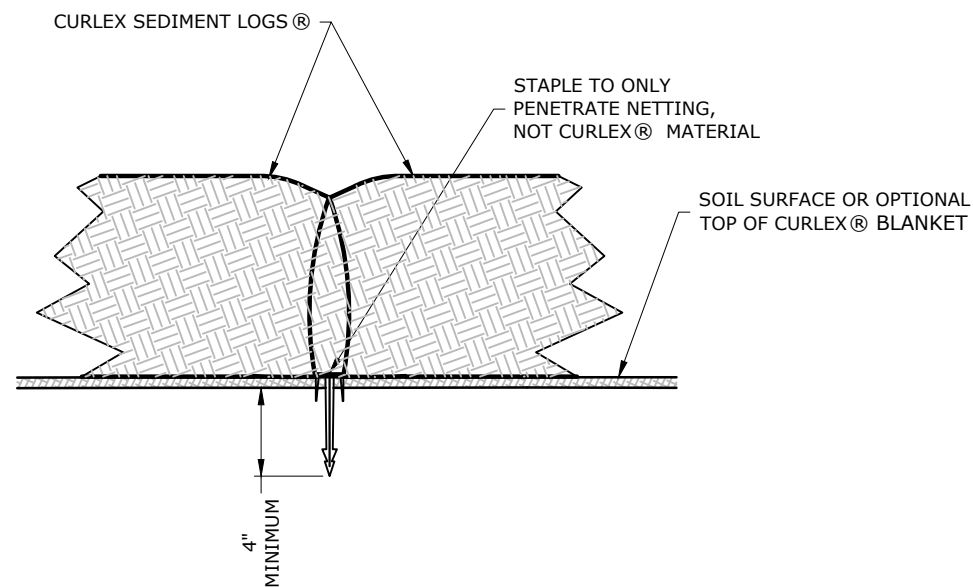
STAKE DETAIL  
NO SCALE

6A  
26



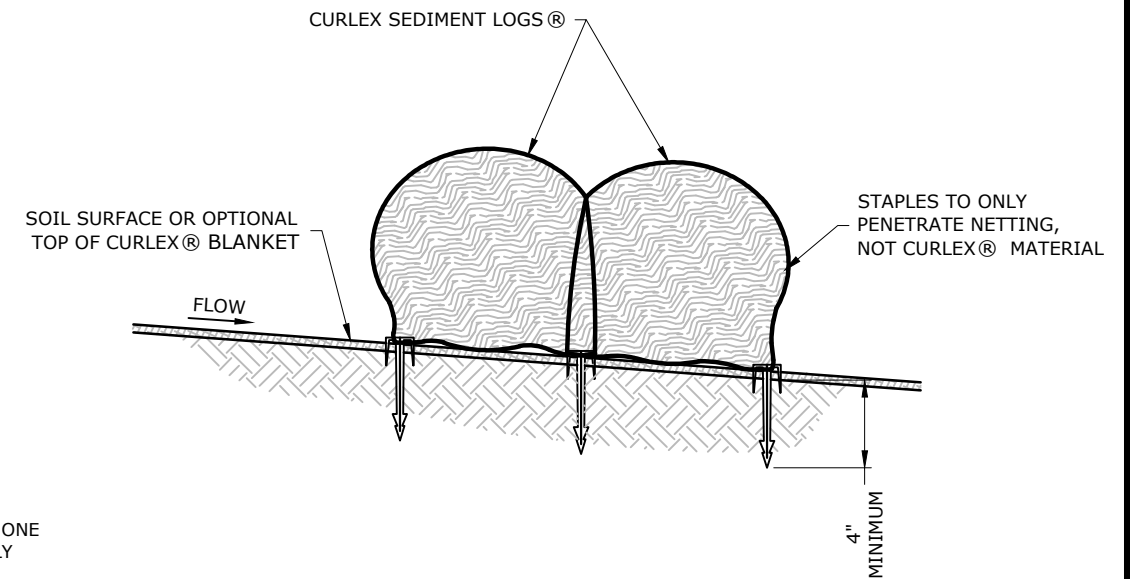
ANCHOR DETAIL (PLAN VIEW)  
OPTIONAL OVERLAPPING JOINT  
NO SCALE

5  
26



STAPLE DETAIL (FRONT VIEW)  
COMMON STAPLE ABUTMENT JOINT  
NO SCALE

4B  
26



STAPLE DETAIL  
NO SCALE

6B  
26

**NOTES:**

1. RECOMMENDED STAPLES ARE E-STAPLE®, 1 IN X 6 IN, U-SHAPED, 11 GAUGE WIRE, OR 2 IN X 8 IN, U-SHAPED, 8 GAUGE WIRE.
2. STAPLES SHALL BE INSTALLED 24 IN APART ON EACH SIDE OF THE CURLEX SEDIMENT LOG. THE TWO ROWS OF STAPLES SHALL BE STAGGERED BY 12 IN ALONG THE LENGTH OF THE CURLEX SEDIMENT LOG. INSTALLATION OF ONE CURLEX SEDIMENT LOG SHALL INCLUDE ONE STAPLE ON EACH END OF THE PRODUCT. ALL STAPLES SHALL BE FULLY INSERTED INTO THE SUBGRADE BELOW THE CURLEX SEDIMENT LOG.
3. ADJOIN TWO CURLEX SEDIMENT LOGS BY PLACING STAPLES THROUGH THE NETTING OF BOTH LOGS ON BOTH SIDES OF THE PRODUCTS.
4. ANCHORING WITH STAPLES IS ONLY APPLICABLE FOR 6 IN AND 9 IN CURLEX SEDIMENT LOGS AND SHALL NOT BE USED IN CHANNELIZED FLOW APPLICATIONS.
5. STAKES MAY BE USED IN CONJUNCTION WITH STAPLES FOR ADDITIONAL ANCHORING OF 6 IN AND 9 IN CURLEX SEDIMENT LOGS, AS DEEMED NECESSARY BY THE ENGINEER.

NO.	BY	DATE	REVISIONS	PROJECT MANAGER
				CHECKED BY:
				APPROVED BY: